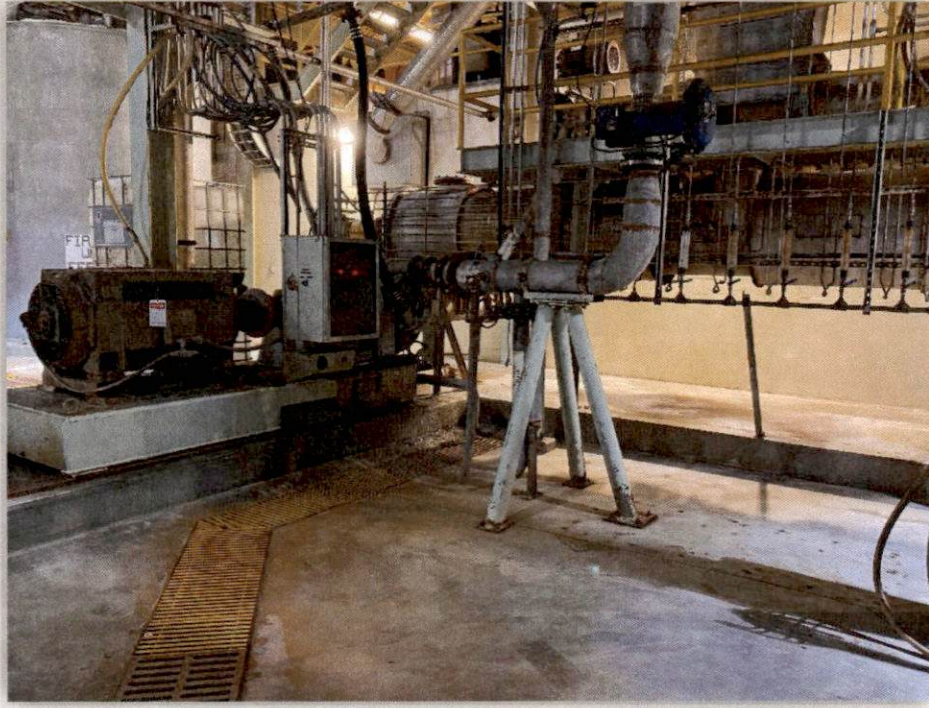


KRIMA KD-710 Dispersion System



Dispenser and Servo Gap Control Station

This system includes 3 basic zones: a dewatering zone, heating zone, and the disperser.

Technical Specifications:

1) KRIMA Dispenser Type KD-710

Features:

- Electro - Hydraulic disc setting (servo-controlled plate gap adjustment)
- Hydraulic System - built in to open and close disperser for maintenance and inspection, providing critical lubrication for bearing assemblies, and controlling plate gap via remote operating panel. These pumps are located in the motor base along with a



Preheater (side view)

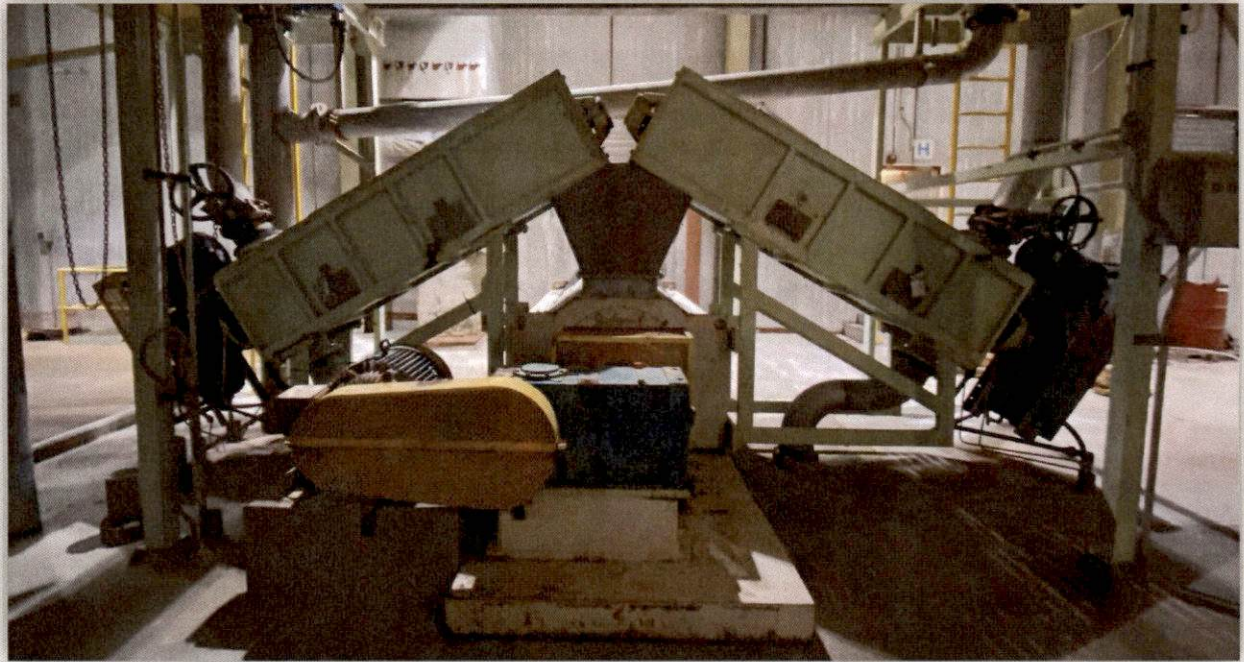
hydraulic reservoir. Safety switches and oil filters also located inside base.

- Headbox level detection – Ensures consistent flow of material through Disperser
- (2) Dilution Ports feed the housing
- Disperser Motor Specs - 600 HP / 1780 RPM / 4160v

2) KRIMA Dewatering Incline Screw - TYPE SD-2040

Features:

- QTY (2) Inclined and Tapered Dewatering Screw

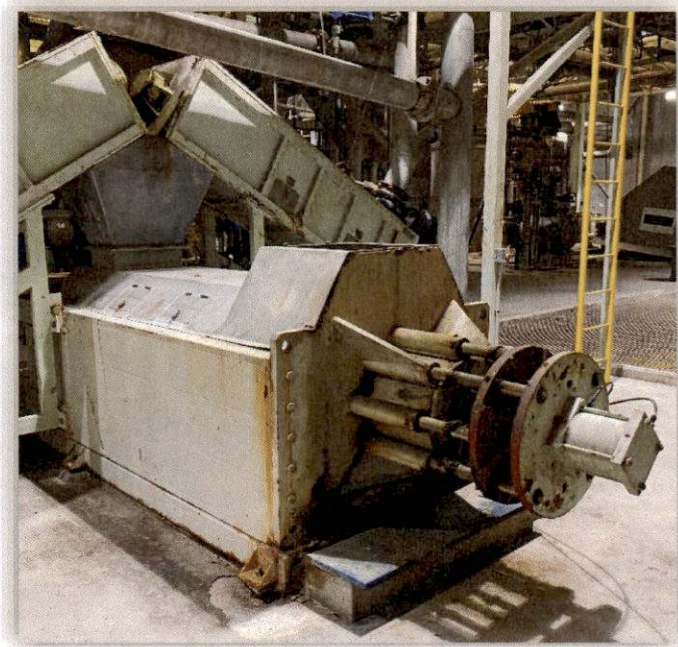


Incline Screw – Type SD-2040

3) KRIMA Screw Press – TYPE RR 550

Features:

- Horizontal Screw Press – pneumatically-regulated counter pressure cone (choke) and conical screw core
- Capable of producing an outlet consistency of up to 35% and inlet consistency should be a minimum of 4% based on feedstock



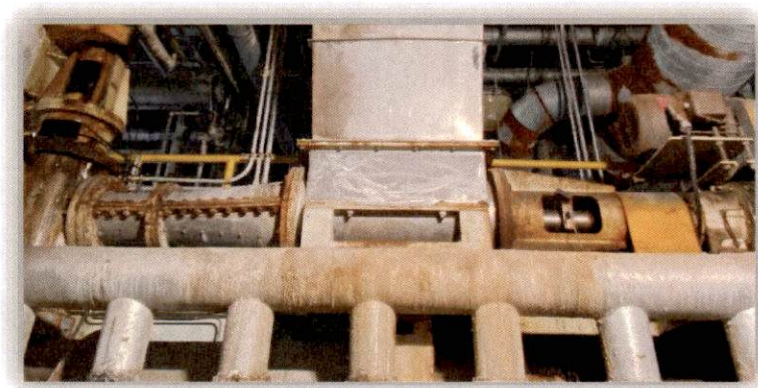
Screw Press Type – RR 550



4) KRIMA Plug Screw – TYPE 3823

Features:

- Allows for a closed system and low steam consumption – Used to seal the heating zone



Plug Screw Type - 3823

5) KRIMA Shredder – TYPE 400

Features:

- Transforms the pulp plug to from the plug screw into “crumbs” for even heating as it is entered into the preheater stage.

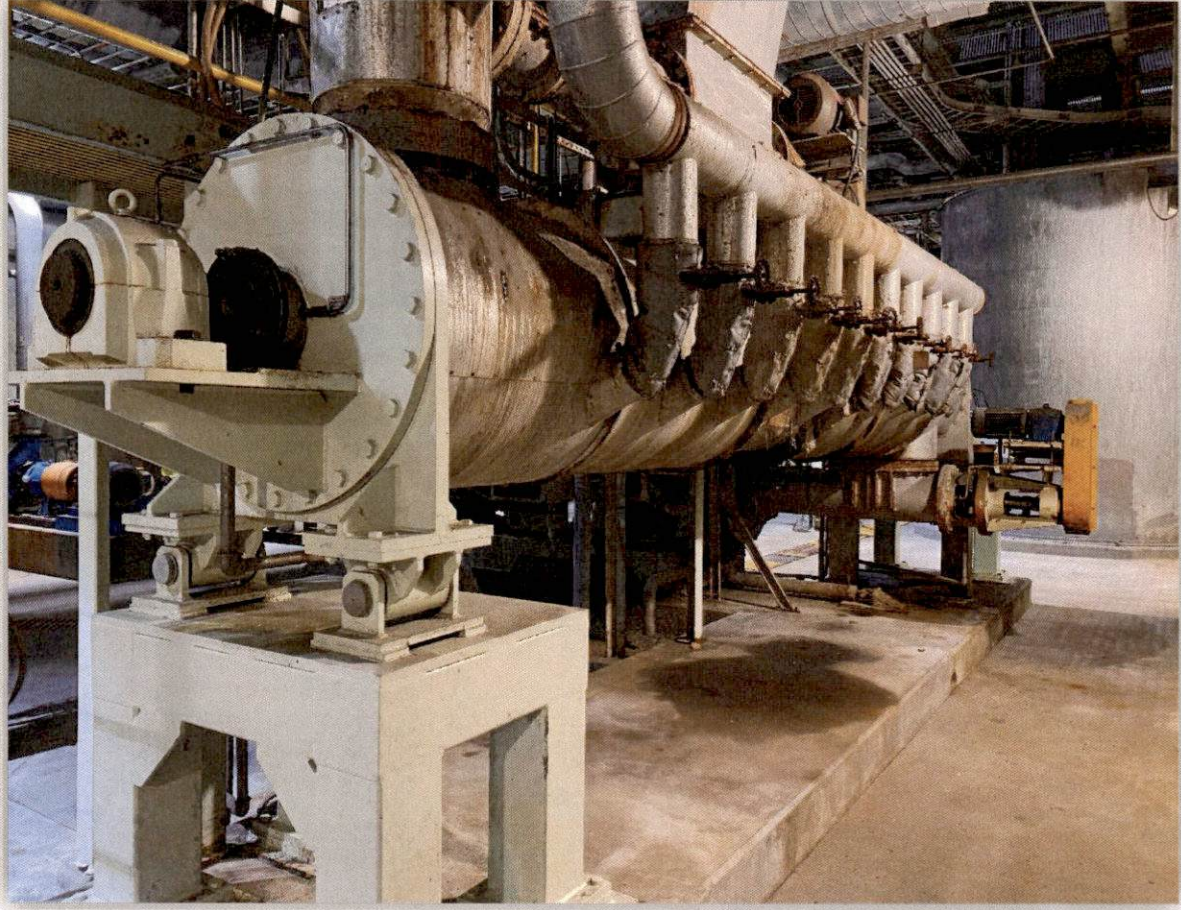


Shredder - Type 400

6) KRIMA Preheater – TYPE 8050

Features:

- Auger for preheating pulp through saturated steam to reach desired temperature setpoint. Steam injection ports run the length of this component.

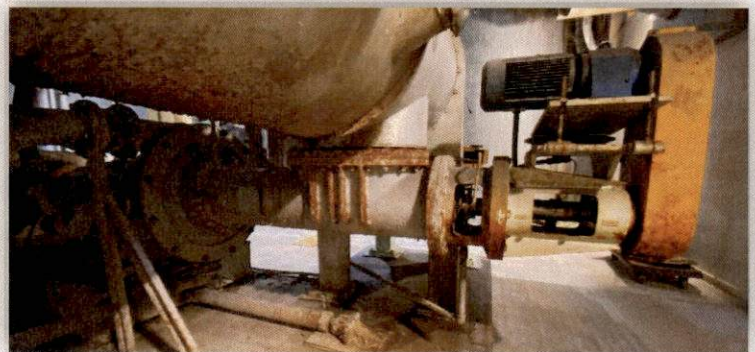


Preheater -Type 8050

7) KRIMA Infeeder – TYPE 350

Features:

- Provides even distribution and consistent feed as pulp enters the disperser



Infeeder – Type 350