

NOTES:
 1: UTILISER LES ITEMS 14 ET 15 COMME GABARIT POUR PERCER ET TAP. 1/4"-20NC, 8 TROUS. USE ITEMS 14 AND 15 AS TEMPLATE TO DRILL AND TAP 1/4"-20NC, 8 HOLES.
 2: UTILISER L'ITEM 40 COMME GABARIT POUR PERCER ET TAP. 1/4"-20NC x 1/2" PROF. 4 TROUS. USE ITEM 40 AS TEMPLATE TO DRILL AND TAP 1/4"-20NC x 1/2" DEEP 4 HOLES.

NO	DESCRIPTION	QTE / QTY	U/M
1	USINAGE DU CHASSIS M.G. AD L.H. FRAME MACHINING MS	1.0000	CH/EA
2	ASSGE DE L'ENCLUME, AD ANVL ASSEMBLY, MS	1.0000	CH/EA
3	ASSGE DU COUTEAU (M.G.) AD/A316/440C KNIFE ASSEMBLY (L.H.), MS/SS316/440C	1.0000	CH/EA
4	ASSEMBLAGE JOINTS & ROULEMENT LIBRE SEALS & LOOSE BEARING ASSEMBLY	1.0000	CH/EA
5	ASSEMBLAGE JOINTS & ROULEMENT FIXE SEALS & FIXED BEARING ASSEMBLY	1.0000	CH/EA
6	ARRGT ROULEAU D'ENVOLE, A1316/AD FLIP ROLL ARRGY, SS316/MS	1.0000	CH/EA
7	ROULEAU DE COMMANDE DRIVE ROLL	1.0000	CH/EA
8	ROULEAU DE GUIDAGE TRACKING ROLL	1.0000	CH/EA
9	ROULEAU D'AJUSTEMENT TAKE-UP ROLL	1.0000	CH/EA
10	INSTALLATION DU ROULEAU D'EMPLEMENT STACK ROLL INSTALLATION	1.0000	CH/EA
11	ASSGE-COMMANDE DU COUTEAU M.G. A1316 KNIFE DRIVE ASSEMBLY (LEFT HAND), SS316	1.0000	CH/EA
12	ASSGE DE LA COMMANDE, A1316 DRIVE ASS'Y, SS316	1.0000	CH/EA
13	GARDE DU COUTEAU, AD KNIFE GUARD, MS	1.0000	CH/EA
14	COUVERCLE, AD COVER, MS	1.0000	CH/EA
15	COUVERCLE A.D. COVER, M.S	1.0000	CH/EA
16	CAPUCHON, PVC A1316 CAP, PVC SS316	1.0000	CH/EA
17	PLAQUE D'IDENTIFICATION HYMAC, .5x-3/4 HYMAC NAME PLATE, .5x-3/4	1.0000	CH/EA
18	PLAQUE D'IDENT. "CAUTION ROTATING MACH." NAMEPLATE "CAUTION: ROTATING MACH" ALUM	1.0000	CH/EA
19	PLAQUE D'IDENTIFICATION (INFO), A1316 NAME PLATE "INFO" SS316	1.0000	CH/EA
20	PLAQUE D'IDENT. "FAIT AU CANADA" A1316 NAME PLATE "MADE IN CANADA" SS316	1.0000	CH/EA
21	COURROIE DRY-LINK 1/8" X 49" X 170" C/A AXE BELT DRY-LINK 1/8" X 49" X 170" C/W PIN	1.0000	CH/EA
22	TIGE FILETEE 1.5"NC A1316 THD ROD 1.5"NC SS316 PIECE 6.5" LG.	2.0000	PO/IN
23	ECROU HEX 1.5"NC A1304 NUT (HEX) 1.5"NC A1304	8.0000	CH/EA
24	RONDILLE FREIN HEL 1.5" A1304 WASHER (HEL LOCK) 1.5" SS304	8.0000	CH/EA
25	ECROU DE TORSION ST150 ACIER 4140 1.5"NC TORQUENUT #ST150 STL 4140	8.0000	CH/EA
26	TIGE FILETEE 1.25"NC A1316 THD ROD 1.25"NC SS316 PIECE 6.5" LG.	2.0000	PO/IN
27	ECROU HEX 1.25"NC A1316 NUT (HEX) 1.25"NC A1316	8.0000	CH/EA
28	RONDILLE FREIN HEL 1.25" A1316 WASHER (HEL LOCK) 1.25" SS316	8.0000	CH/EA
29	ECROU DE TORSION ST125 ACIER 4140 1.25"NC TORQUENUT #ST125 STL 4140	8.0000	CH/EA
30	MS TETE HEX 0.75"NC X 2.25" A1316 CAPSC (HEX HD) 3/4"NC X 2-1/4" SS316	8.0000	CH/EA
31	RONDILLE FREIN HEL 0.75" A1316 WASHER (HEL LOCK) 0.75" SS316	8.0000	CH/EA
32	RONDILLE PLATE 0.75" A1316 WASHER (FL) 0.75" SS316	8.0000	CH/EA
33	TIGE FILETEE 0.75"NC A1316 THD ROD 0.75"NC SS316 PIECE 8" LG.	16.0000	PO/IN
34	ECROU HEX 0.75"NC A1316 NUT (HEX) 0.75"NC SS316	8.0000	CH/EA
35	MS TETE HEX 0.5"NC X 2.5" A1316 CAPSC (HEX HD) 1/2"NC X 2-1/2" SS316	8.0000	CH/EA
36	RONDILLE FREIN HEL 0.5" A1316 WASHER (HEL LOCK) 0.5" SS316	8.0000	CH/EA
37	RONDILLE PLATE 0.5" AN960C #8017A210 WASHER (FLAT) 0.5" AN960C #8017A210	8.0000	CH/EA
38	MS TETE HEX 0.5"NC X 1.5" A1316 CAPSC (HEX HD) 1/2"NC X 1-1/2" SS316	8.0000	CH/EA
39	RONDILLE PLATE 0.5" A1316 WASHER (FL) 0.5" SS316	8.0000	CH/EA
40	GARDE, AD GUARD, MS	1.0000	CH/EA
41	MS TETE HEX 1/4"NC X 1/2" LG. AT 316 WX. HD. CAP SCR. 1/4"NC X 1/2" LG. SS 316	4.0000	CH/EA
42	MS TETE HEX 0.25"NC X 0.75" A1316 CAPSC (HEX HD) 1/4"NC X 3/4" SS316	8.0000	CH/EA
43	RONDILLE FREIN HEL 0.25" A1316 WASHER (HEL LOCK) 0.25" SS316	8.0000	CH/EA

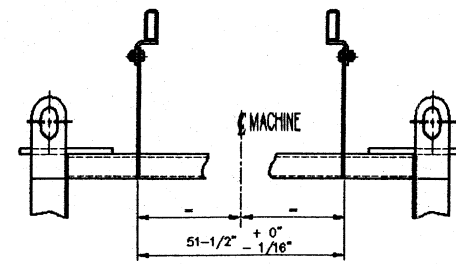
REV	DATE	INT.	REVISION	DATE	APP.

DIMENSIONS DONNEES EN MILLIMETRES
 DIMENSIONS DONNEES EN INCHES
 UNITS: 1" = 25.4mm
 1mm = 0.03937"
 1/16" = 1.5875mm
 1/8" = 3.175mm
 1/4" = 6.35mm
 3/8" = 9.525mm
 1/2" = 12.7mm
 5/8" = 15.875mm
 3/4" = 19.05mm
 7/8" = 22.225mm
 1" = 25.4mm

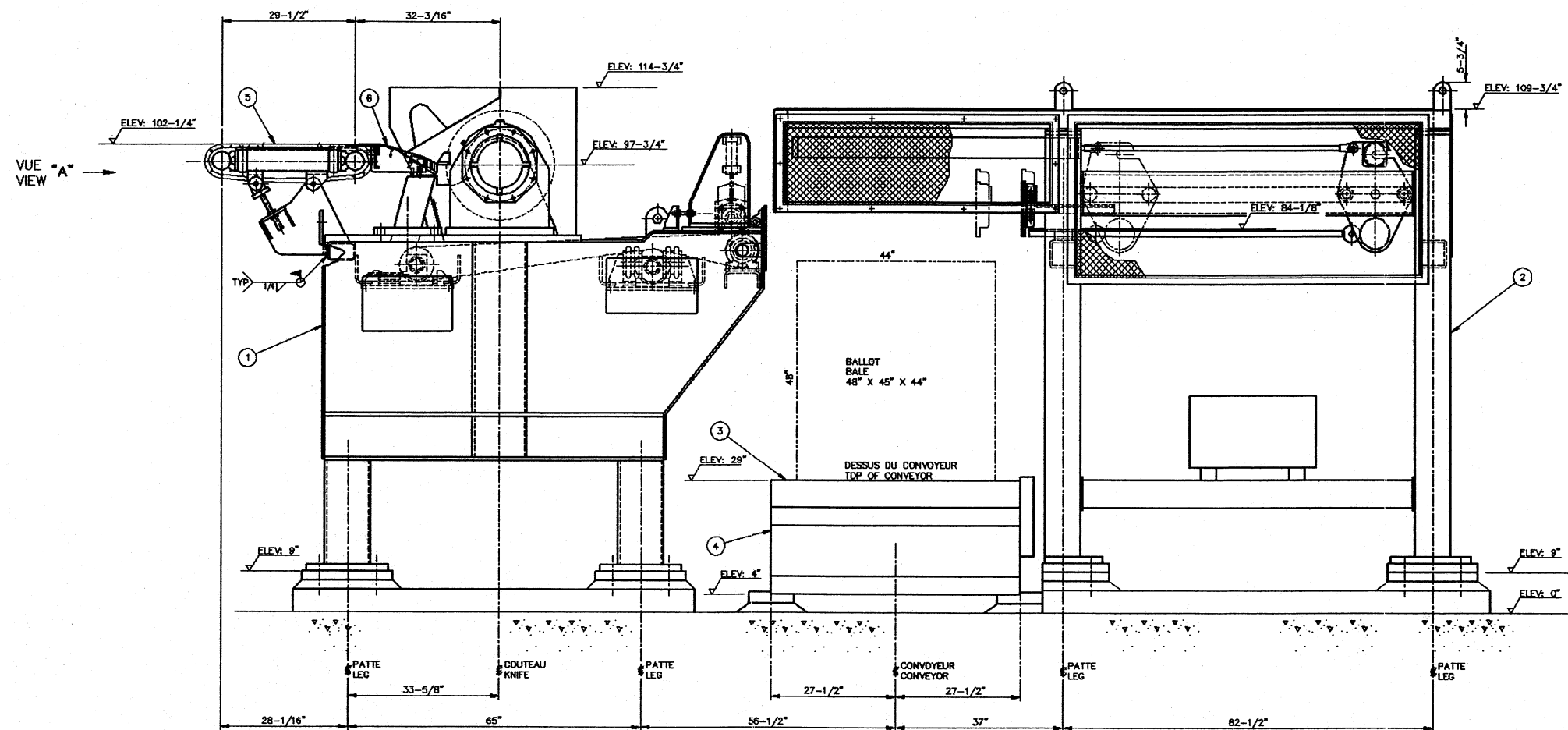
L'ASSEMBLAGE DE LA COUPEUSE (M.G.) A1316/440C
 ARRGY GENERALE COUPEUSE, EMPLEUSE
 CUTTER ASS'Y (LEFT HAND) MS S.S. 316/440C
 GEN. ARRGY CUTTER LAYBY
 CE - 40 - CL

D. M. SAVOIE 31/09/06
 V. SAVOIE 01/10/06
 1/8" ± 0.015"
 1" ± 0.015"
 1cm
 No. E-012530

F
E
D
C
B
A



VUE - VIEW "A"



NON MONTRE
NOT SHOWN

Q	DESIGNATION	N°-HE012352	DESSIN / DRAWING
1	ASS'GE DE LA COUPEUSE (M.G.), AD/A1316 CUTTER ASS'Y (LEFT HAND), MS/SS316	E-012350 HE012350	1.0000 CH/EA
2	ASS'GE GENERAL DES FOURCHETTES, AD FORKS GENERAL ASS'Y, MS	E-012314 HE012314	1.0000 CH/EA
3	CONVOYEUR DE TABLE ELEVATRICE A CISEAUX SCISSOR LIFT CONVEYOR	E-012344 HE012344	1.0000 CH/EA
4	TABLE ELEVATRICE A CISEAUX (CAP. 12000 LB) SCISSORS LIFT TABLE (LOAD 12000 LB)	SK-6158 SS6158	1.0000 CH/EA
5	ASS'GE DU CONVOYEUR DE TRANSFERT (M.G.) TRANSFER CONVEYOR ASSEMBLY (L.H.)	E-012440 HE012440	1.0000 CH/EA
6	INSTALLATION DU TABLIER, A1316 & AD APRON INSTALLATION, SS316 & MS	D-022085 HE022085	1.0000 CH/EA
7	UNITE DE COMMANDE VARIA. (COUPEAU) VARIABLE DRIVE UNIT (KNIFE) "RELCON"	7990000007 7990000008	1.0000 CH/EA
8	UNITE DE COMMANDE VARIA. (CONV. TRANSFERT) VARIABLE DRIVE UNIT (TRANSFER CONV.)	7990000008 7990000008	1.0000 CH/EA
9	INSTALLATION DES COMPOSANTES ELECT. ELECTRICAL COMPONENTS INSTALLATIONS	E-012870 HE012870	1.0000 CH/EA
10	CABLAGE ELECTRIQUE ELECTRICAL WIRING	E-012743 HE012743	1.0000 CH/EA
11	INSTALLATION DES CONDUITS PNEUMATIQUE PNEUMATIC CONDUITS INSTALLATIONS	E-012873 HE012873	1.0000 CH/EA

NOTE:
LES MACHINES SONT DEMONTEES PARTIELLEMENT POUR L'EXPEDITION.
L'ASSEMBLAGE AU CHANTIER EST FAIT PAR LE CLIENT.
VOIR DIAGRAMME D'EXPEDITION POUR LES DETAILS
DESSIN # D-22396.
MACHINES ARE PARTIALLY DISASSEMBLED BEFORE SHIPMENT.
THE RE-ASSEMBLY ON SITE IS DONE BY CUSTOMER.
SEE SHIPPING DIAGRAM FOR DETAILS DWG # D-22396.

CUSTOMER: LAYBOY, INC. BAYERSHIRE PAPER
CUST. P.O. _____
PROJECT: REVERSE _____
HYMAC NO. X-8705 _____

EQUIPMENT	EQUIP. No.	MACH. No.
CUTTER LAYBOY		X-8705

CERTIFIED
FOR
CONSTRUCTION

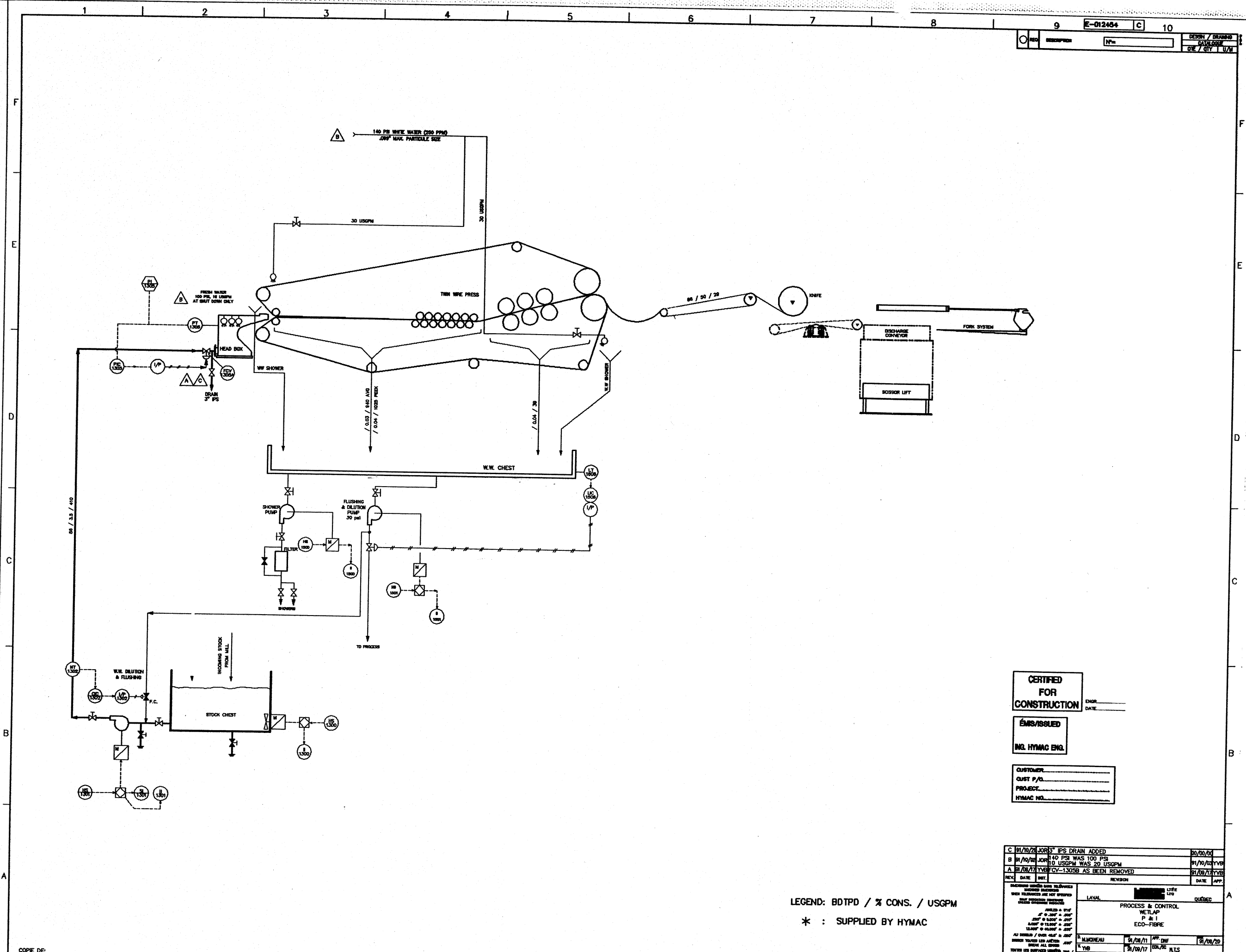
ÉMS/ISSUED
ING. HYMAC ENG.

REV.	DATE	INT.	REVISION	DATE	APP.
1			REVISED	12/12/04	

LAYBOY
 ARRGT GEN. COUPEUSE EMPLEUSE
 COUPEUSE EMPLEUSE 40" (MAIN GAUCHE)
 CUTTER LAYBOY GEN. ARRGT
 CUTTER LAYBOY 40" (LEFT HAND)

A. M. DELUCA
 12/12/04
 12/12/04
 12/12/04
 12/12/04

No. E-012352



CERTIFIED FOR CONSTRUCTION
 ENGR. _____
 DATE _____

ISSUED

ING. HYMAC ENG.

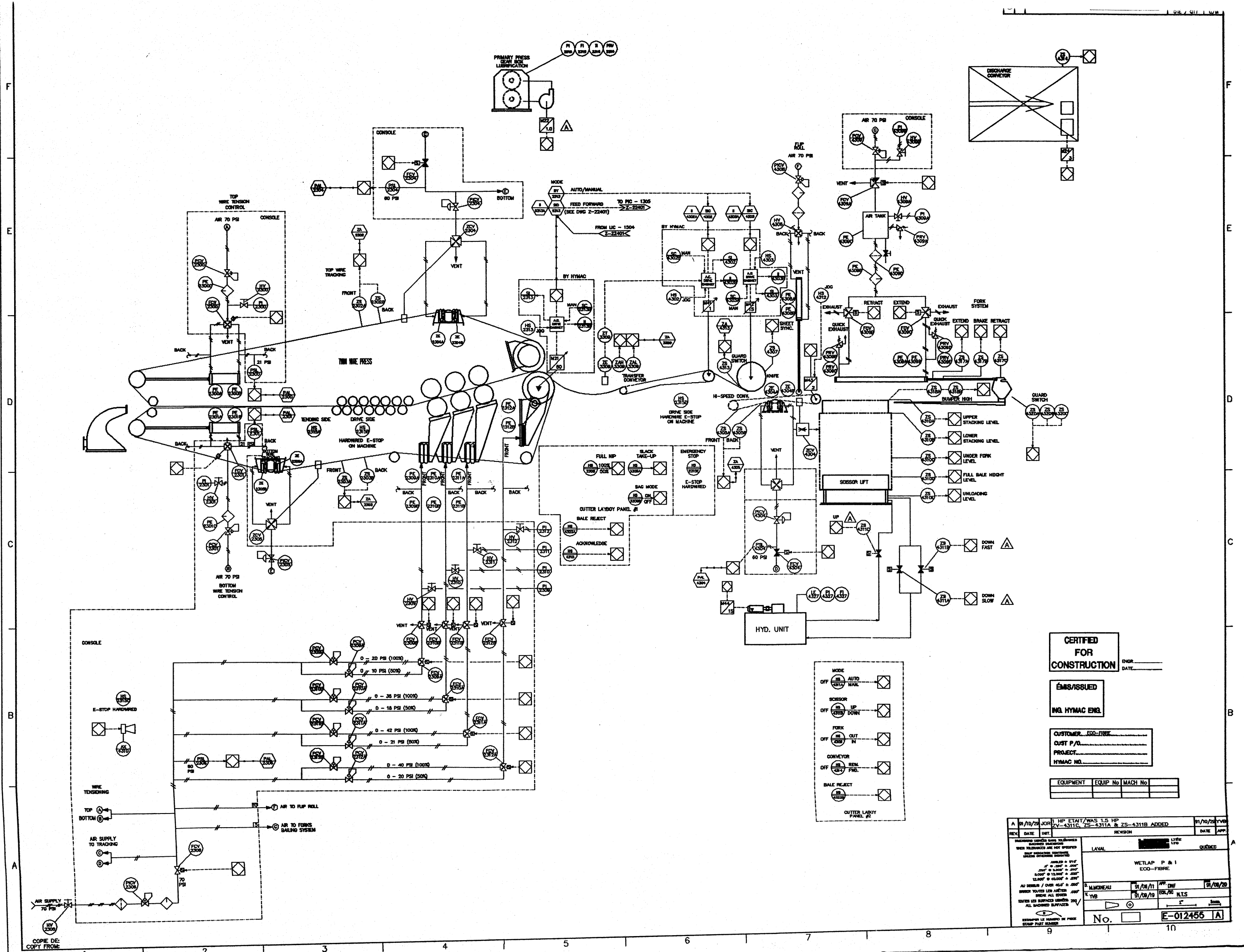
CUSTOMER _____
 CUST P/O _____
 PROJECT _____
 HYMAC NO. _____

LEGEND: BDTPD / % CONS. / USGPM
 * : SUPPLIED BY HYMAC

REV	DATE	BY	REVISION	DATE	APP
C	01/10/20	JOR	5" IPS DRAIN ADDED	02/09/20	
B	01/10/20	JOR	140 PSI WAS 100 PSI	01/10/20	YVB
A	01/09/17	JOR	10 USGPM WAS 20 USGPM	01/09/17	YVB
			CY-1305B AS BEEN REMOVED	01/09/17	YVB

LAVAL	_____	DATE	_____
PROCESS & CONTROL	WET LAP	P. & I.	ECCO-FIBRE
DATE	01/09/17	DATE	01/09/20
BY	YVB	BY	YVB

COPIE DE
 COPY FROM:



CERTIFIED FOR CONSTRUCTION

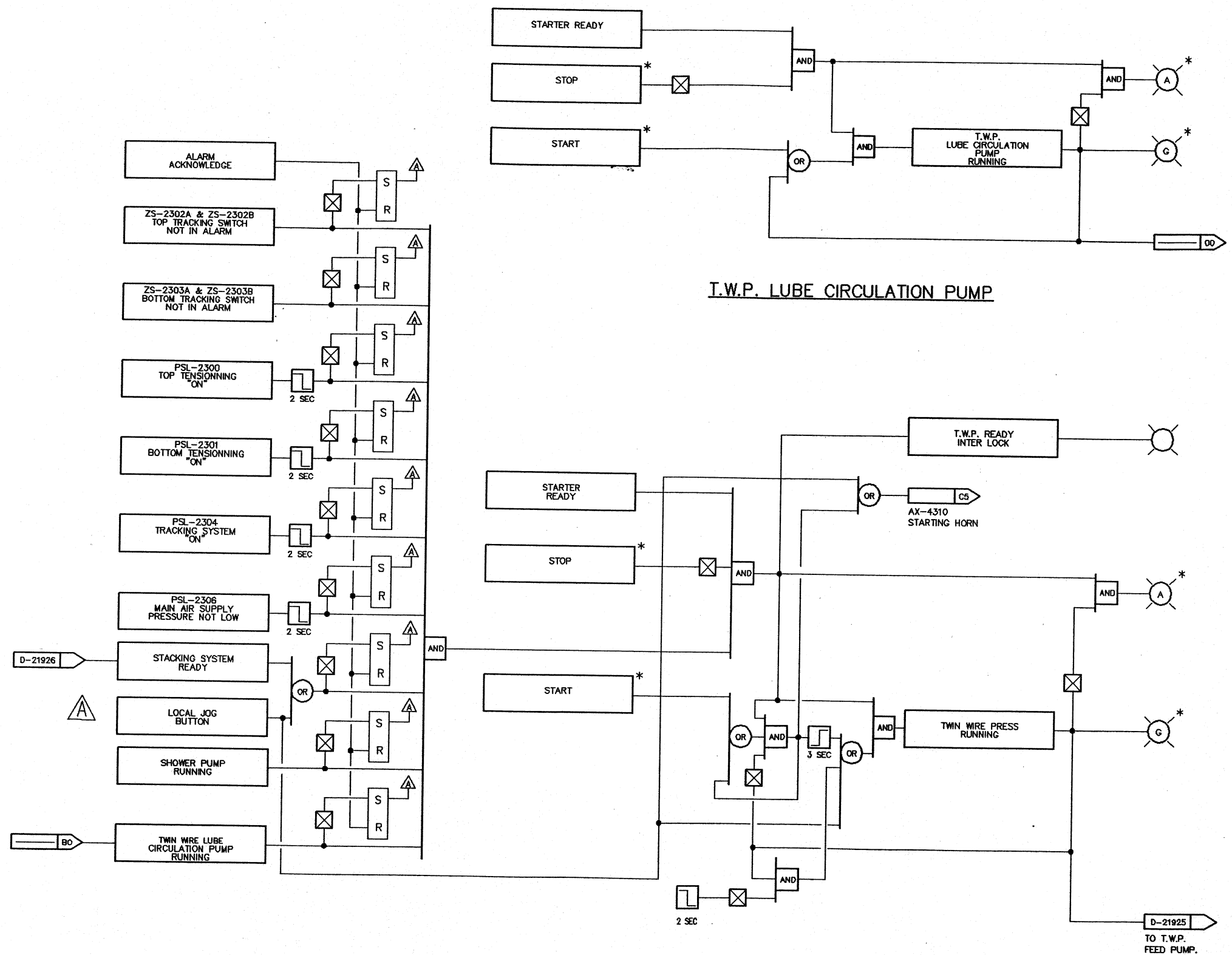
ÉMISSIONS
ING. HYMAC ENG.

CUSTOMER: ECO-FIBRE
CUST P/O:
PROJECT:
HYMAC NO.:

EQUIPMENT	EQUIP No	MACH No

REV. DATE	INT.	REVISION	DATE	APP.
A 01/10/20	JOB	HP ETAT/WAS 1.5 HP 25-4311B, 25-4311A & 25-4311B ADDED	01/10/20	YVB
<p>LAVAL</p> <p>WETLAP P & I ECO-FIBRE</p> <p>D. MACHEAU 01/08/11 APP. DWF 01/08/20</p>				
<p>No. E-012455 A</p>				

COPIE DE
COPY FROM



T.W.P. LUBE CIRCULATION PUMP

HARDWIRED TO M.C.C.

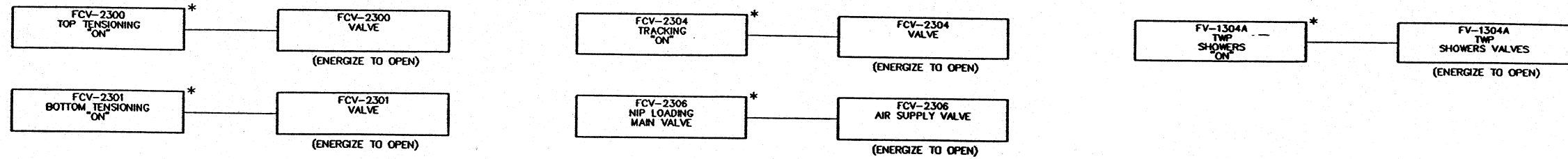
TWIN WIRE PRESS (T.W.P.)

CERTIFIED FOR CONSTRUCTION
 ENGR.
 DATE

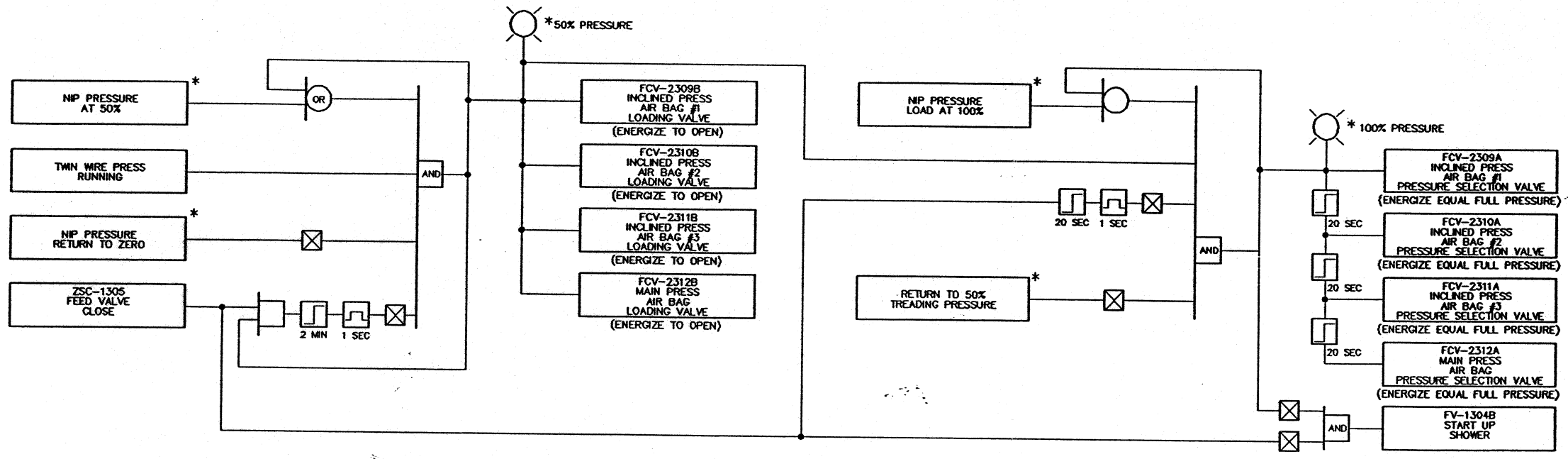
CUSTOMER.....
 CUST P/O.....
 PROJECT.....
 HYMAC NO.....

ÉMIS/ISSUED
 ING. HYMAC ENG.

A	20/9/91	YB	JOG BUTTON ADDED	29/9/91	YB
REV	DATE	PAR	REVISION	DATE	APP
ECO-FIBRE TWIN WIRE PRESS LOGIC DIAGRAM PAGE 1					
HYMAC LTÉE LTD LAVAL QUÉBEC					
D	M. MOINEAU	10/06/91	APP.		
V	GLAPIERRE	11/06/91	ECH./SCA.	N.T.S.	
			1" 1cm		
No.	199	D-21923	A		



TWIN WIRE PRESS VALVES



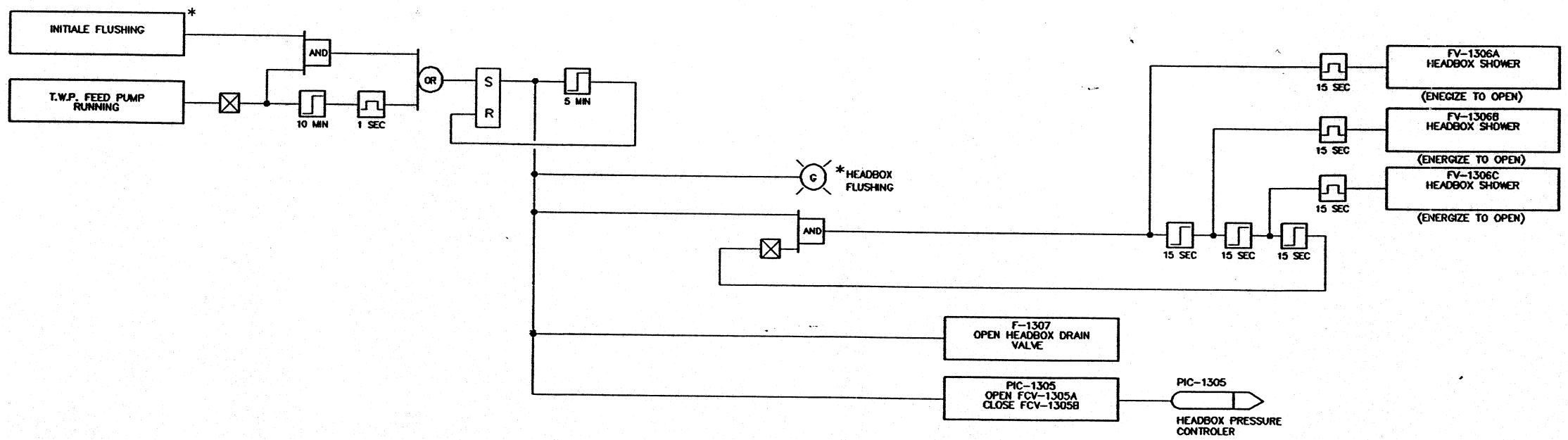
APPROVAL PRINT ONLY

PLEASE RETURN ONE APPROVED COPY TO HYMAC WITHIN 10 WORKING DAYS. ALL TECHNICAL INFORMATION REQUIRED FOR THE CONSTRUCTION OF THIS EQUIPMENT MUST BE PROVIDED. ANY OMISSION OR DELAY MAY AFFECT THE DELIVERY SCHEDULE.

CUSTOMER: ECO FIBRE
 CUST P/O: _____
 PROJECT: RIVERSIDE
 HYMAC NO. K-8704/05/06

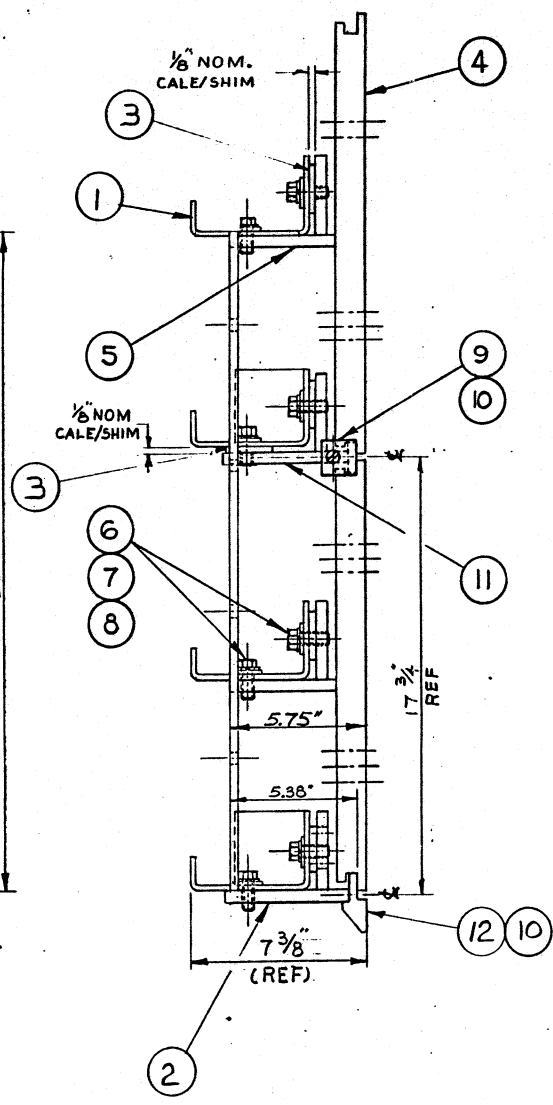
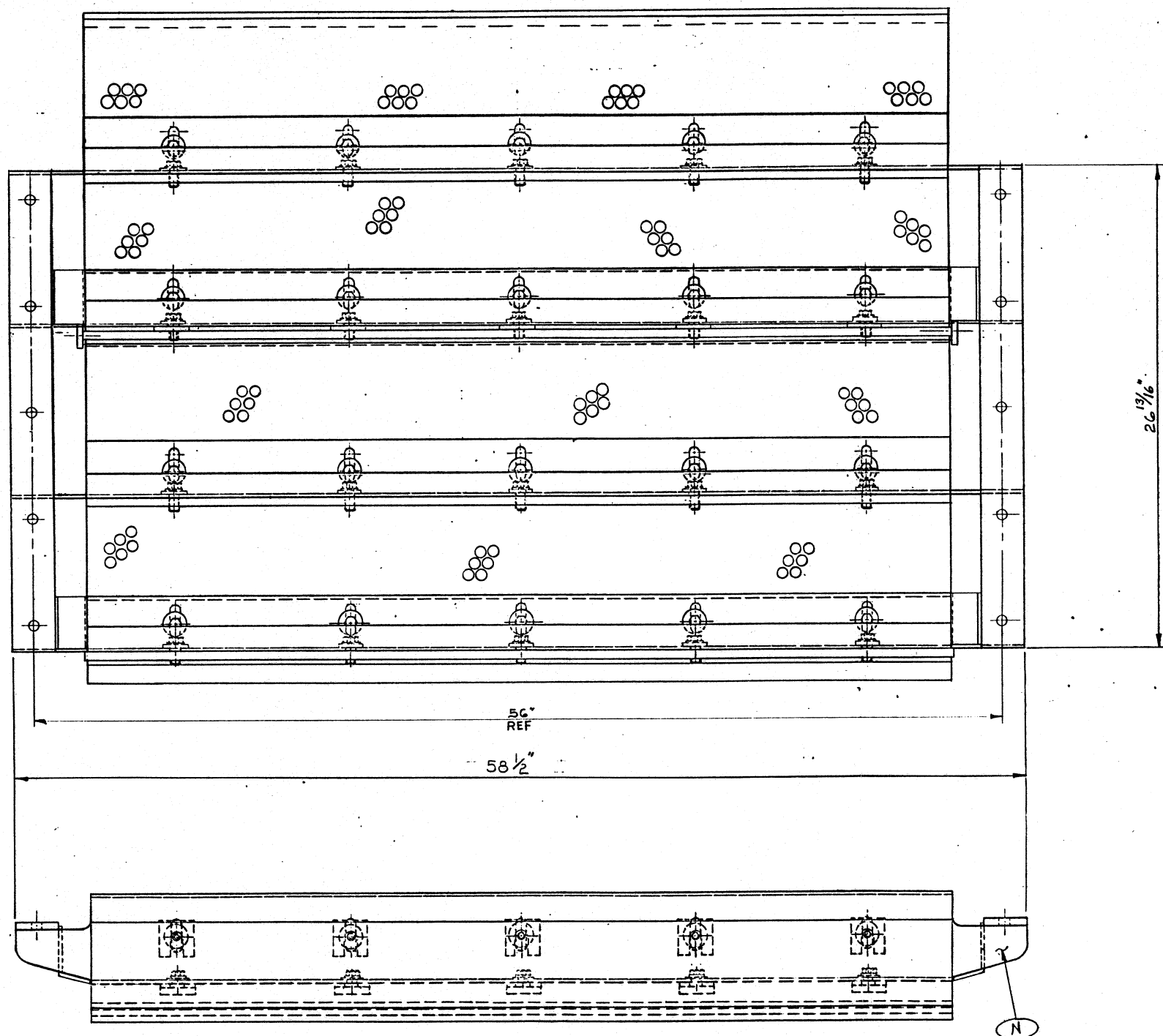
ÉMIS/ISSUED
 14/6/91
 ING. HYMAC ENG.

TWIN WIRE PRESS NIP LOADING



TWIN WIRE PRESS FLUSHING

REV	DATE	PAR	REVISION	DATE	APP
ECO-FIBRE TWIN WIRE PRESS LOGIC DIAGRAM PAGE 2					
HYMAC <small>LYÉE LTD</small>			LAVAL QUÉBEC		
D	M. MOINEAU	10/06/91	APP.		
V	G. LAPIERRE	11/06/91	EDH/SCA	N.T.S.	
		1" 1cm			
No. 199		D-21924			



REQ.	REF.	MAT.
1	D-22036	SS
2	D-16771	SS
3	A-11471	SS
4	D-21411	CERAM P
5	D-16897	SS
6		SS
7		SS
8		SS
9	A-13647	SS
10		SS
11	D-16785	SS
12	B-20694	CERAM P

POIDS ESTIME : 349 LBS
EST. WEIGHT

DIMENSIONS USINEES SANS TOLERANCES
MACHINED DIMENSIONS
WHEN TOLERANCES ARE NOT SPECIFIED
SAUF INDICATION CONTRAIRE
UNLESS OTHERWISE INDICATED

ANGLES ± 0°10'
0° @ 250" ± .005"
250" @ 5,000" ± .010"
5,000" @ 12,500" ± .020"
12,500" @ 40,000" ± .030"

AU DESSUS / OVER 40.0" ± .050"

BRISER TOUTES LES ARÊTES:
BREAK ALL EDGES: .030"

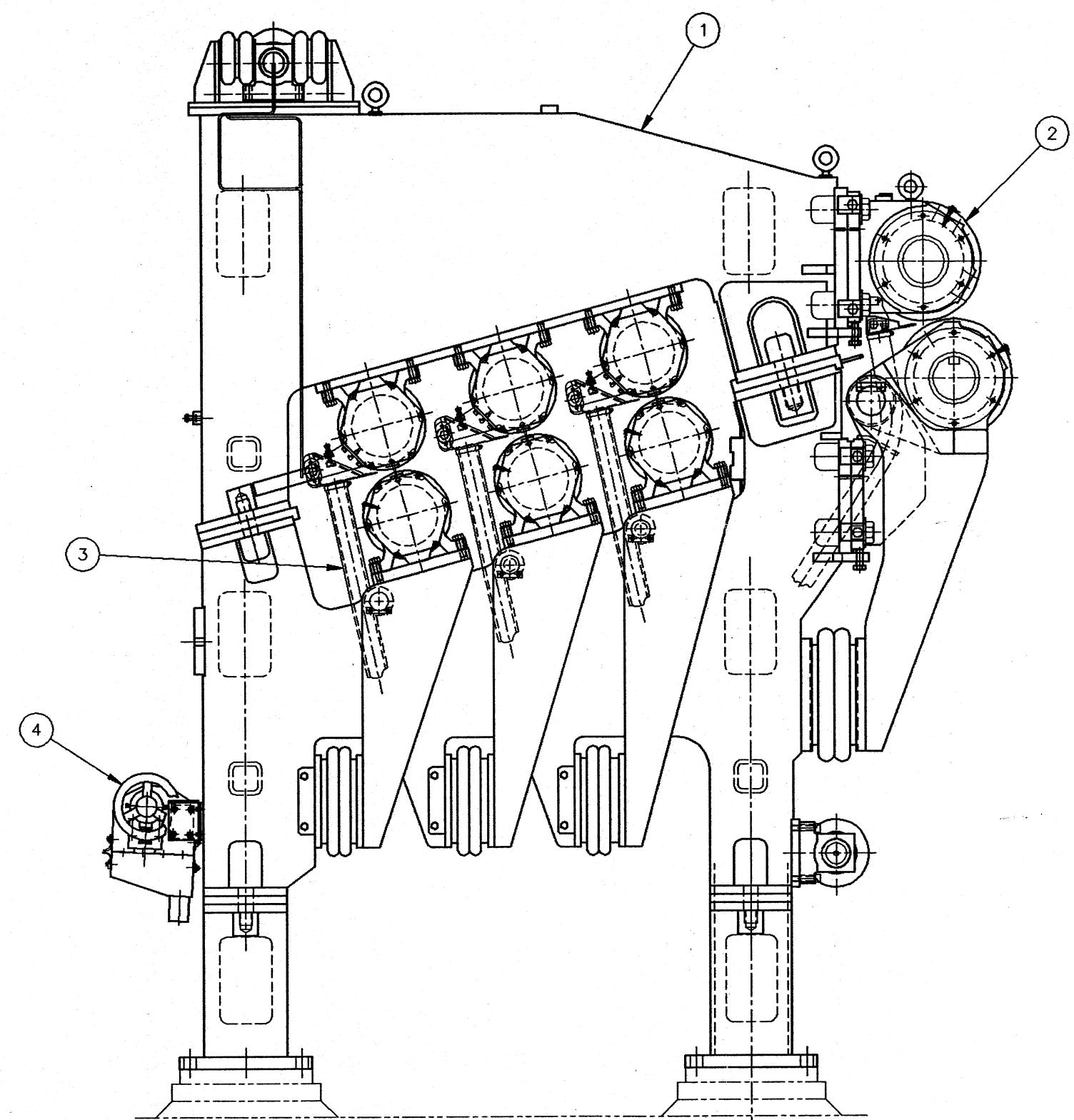
TOUTES LES SURFACES USINEES:
ALL MACHINED SURFACES: .250"

ESTAMPER LE NUMÉRO DE PIÈCE
STAMP PART NUMBER

REV	DATE	PAR	REVISION
SOUS ASS'GE FEUILLES STAT. D'ENTREE, A1316 ASS'GE DU CHASSIS DE TABLE, PDT INLET STATIC FOILS SUB-ASS'Y, SS 316 TABLE FRAME ASS'Y, TWP			
HYMAC LTÉE			
LAVAL		QUÉBEC	
D. N. COTE	6-11-91	APP. DNF	25-11-91
CK. Sym	25-11-91	ECH. NTS	
1" = 1 CM			
No. <input type="text"/>		D-22039	

REV. 11

D
C
B
A



POIDS
WEIGHT : 32 960 lbs

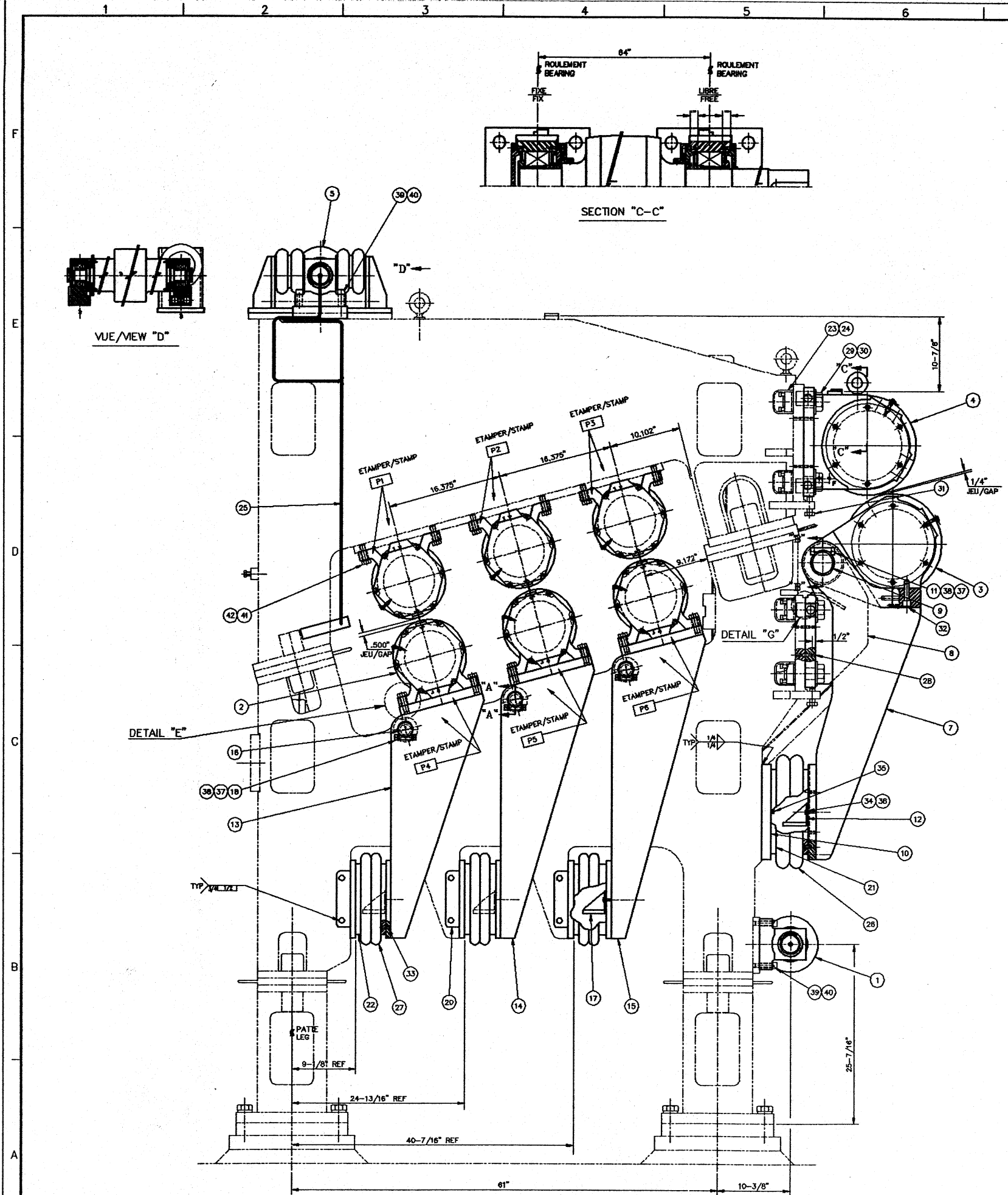
COPIE DE:
COPY FROM:

REQ.		DESCRIPTION	N°=HCO21083	DESSIN / DRAWING	
				CATALOGUE	
				QTÉ / QTY	U/M
1	1	ASSEMBLAGE CHASSIS H.P.,AD/AI HIGH PRESSURE FRAME ASSEMBLY, MS & SS		E-012584 HE012584	CH/EA
2	1	ARRG'T BRAS & ROUL. HAUTE PRESSION HIGH PRESSURE ARMS & ROLLS ARRG'T		E-012677 HE012677	CH/EA
3	1	INSTALLATION DES RACLOIRS, AI316L DOCTOR BLADES INSTALLATION, SS316L		D-022248 HD022248	CH/EA
4	1	INSTALLATION DE LA DOUCHE DU BAS, AI LOWER SHOWER INSTALLATION, SS		D-022181 HD022181	CH/EA

REV.	DATE	INIT.	REVISION		DATE	APP.
DIMENSIONS USINÉES SANS TOLÉRANCES MACHINED DIMENSIONS WHEN TOLERANCES ARE NOT SPECIFIED SAUF INDICATION CONTRAIRE UNLESS OTHERWISE INDICATED ANGLES ± 0°10' .0" ± .250" ± .005" .250" ± 5.000" ± .010" 5.000" ± 12.500" ± .020" 12.500" ± 40.000" ± .030" AU DESSUS / OVER 40.0" ± .050" BRISER TOUTES LES ARRÊTES: .030" BREAK ALL EDGES: TOUTES LES SURFACES USINÉES: 250√ ALL MACHINED SURFACES: N ESTAMPER LE NUMERO DE PIECE STAMP PART NUMBER.			hymac LTD LAVAL QUÉBEC		ASS'GE GEN. HAUTE PRESSION, AI316L AD ASS'GE GEN. PRESSE DOUBLE TOILE, MG 40" HIGH PRESS. GEN. ASS'Y, MS & SS TWIN WIRE PRESS GEN. ASS'Y L.H. 40", TWP	
D. N.COTE	DATE 91/08/23	APP. PIP	DATE 92/02/11			
V. SYM	DATE 92/02/11	ECH./SC 3/32"=1"				
No. <input type="text"/>			C-021083 <input type="text"/>			

D
C
B
A

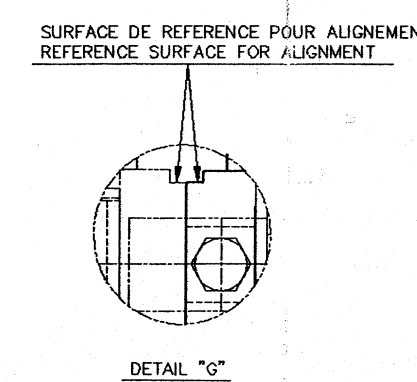
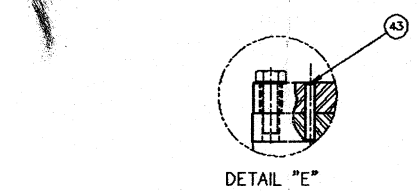
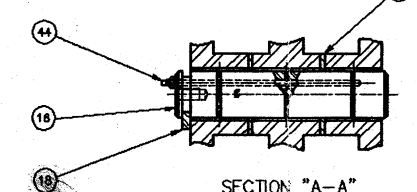
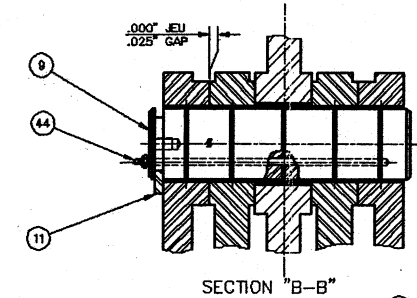
1 2 3 4



NO	DESCRIPTION	QTE / QTY	UN	DESIGN / DRAWING
1	ASSEMBLAGE ROULEAU DE DEFLEXION	1	EA	0-021118
2	ASSEMBLAGE ROULEAU DE PRESSE	1	EA	0-021118
3	ASS'GE ROULEAU DE COMMANDE INFERIEUR	1	EA	0-021117
4	ASS'GE ROULEAU DE COMMANDE SUPERIEUR	1	EA	0-021118
5	ASSEMBLAGE ROULEAU DE GUIDAGE	1	EA	0-021112
7	ASSEMBLAGE BRAS DE COMMANDE, AD/AI	2	EA	0-021202
8	SUPPORT BRAS DE COMMANDE, AD/AI	2	EA	0-021202
9	ARBRE DE BRAS DE COMMANDE, AI416	2	EA	0-020245
10	BASE D'ACTUATEUR #21-2, AI316	2	EA	0-020243
11	BARRE DE RETENUE, AI316	2	EA	0-013438
12	BUTEE D'ACTUATEUR PNEU DE COMMANDE, AD	2	EA	0-020274
13	ASSEMBLAGE DU BRAS DE LEVER #1, AD & AI	2	EA	0-021440
14	ASSEMBLAGE DU BRAS DE LEVER #2, AD & AI	2	EA	0-021441
15	ASSEMBLAGE DU BRAS DE LEVER #3, AD & AI	2	EA	0-021442
16	ARBRE DE BRAS DE PRESSE, AI416	2	EA	0-020548
17	BUTEE D'ACTUATEUR PNEU DE PRESSE, AD	2	EA	0-020553
18	BARRE DE RETENUE, AI316	2	EA	0-013800
19	ESPACEUR, UHMWPE	2	EA	0-020546
20	SUPPORT D'ACTUATEUR, AI316	2	EA	0-018043
21	ANNEAU CORDON #21-2, ADIER-316	2	EA	0-017858
22	ANNEAU CORDON AI316	2	EA	0-018033
23	ECROU DE TORSION ST150 ACIER 4140 1.5"NC	2	EA	2040150089
24	CAPUCHON, PVC AI316	2	EA	0-017428
25	SYSTEME DE LUBRIFICATION	1	EA	0-021382
26	POCHETTE A AIR (FREESTONE) #W01-358-0140	2	EA	8PABA02212
27	POCHETTE A AIR (FREESTONE) #W01-358-0226	2	EA	8PABA02223
28	DOUPILLE CYLINDR 0.375" DIA X 1.5" AD	2	EA	2413752400
29	MS TETE HEX 1.5"NC X 4.375" AD	2	EA	2262407800
30	RONDELLE PLATE 1.5" AD	2	EA	2184000001
31	MS TETE HEX 0.75"NC X 2" AI316	2	EA	2267200222
32	MS TETE CYL 0.75"NC X 2.5" AI304	4	EA	2271204020
33	MS TETE BOMBEE 0.375"NC X 1" AI304	18	EA	2280801620
34	RONDELLE FREIN HEL 3/8" AI304	2	EA	2210800020
35	BOUCHON TETE CARREE 1/4"NPT AI316	2	EA	4250400022
36	MS TETE HEX 0.375"NC X 0.875" AI304	2	EA	2260801420
37	RONDELLE FREIN HEL 0.25" AI304	2	EA	2210400020
38	MS TETE HEX 0.25"NC X 0.75" AI304	2	EA	2260401220
39	MS TETE CYL 0.625"NC X 3" AI316	8	EA	2271004822
40	RONDELLE FREIN HEL 0.625" AI304	8	EA	2211000020
41	MS TETE HEX 0.75"NC X 2.5" AI316	48	EA	2211200022
42	DOUPILLE CYLINDR 0.5" DIA X 2.5" AD	24	EA	2415004601

NOTES:

- TOUS LES ASSEMBLAGES DE ROULEMENTS FIXE DOIVENT ETRE INSTALLES SUR LE COTE PIVOT. (EXCEPTE POUR LE GUIDAGE.)
- ALL FIXE BEARINGS ASSEMBLIES MUST BE INSTALLED ON PIVOT SIDE. (EXCEPT FOR TRACKING.)
- LE CENTRE EN CENTRE DES ROULEMENTS DOIT ETRE TENU DE FACON A OBTENIR DES DIMENSIONS EGALES DE CHAQUE COTE DU ROULEMENT TEL QUE DEMONTRÉ SUR LA SECTION "C-C". RELOCALISER LE BÂTI DU ROULEMENT LIBRE AU BESOIN.
- BEARINGS CENTER LINES MUST BE HOLD TO OBTAIN EQUAL DIMENSIONS ON BOTH SIDES OF BEARING AS SHOWN ON SECTION "C-C". RELOCATE FREE BEARING HOUSING IF NECESSARY.
- INSTALLER LES DOUPILLES APRES L'AJUSTEMENT DES ROULEAUX DE COMMANDE ET PRESSE, COMME SUIV:
- A 2 PLACES EN DIAGONAL SUR CHAQUE PIECE, LE PLUS DISTANT POSSIBLE.
- INSTALL DOWEL PINS AFTER ADJUSTING ROLLS DRIVE AND PRESS AS FOLLO.
- DIAGONALLY AT 2 PLACES, ON EACH PIECE AS DISTANT AS POSSIBLE.
- POUR SERVICE SUR LES ROULEMENTS, UTILISER LES OUTILS DE SERRAGE REF: # RESPECTIVEMENT POUR LES ROULEMENTS SKF.
- FOR SERVICE ON BEARING, USE TIGHTENING TOOL REF: # RESPECTIVELY FOR BEARINGS SKF.
- IDENTIFIER LES PIECES EN UTILISANT UN LETRAGE 1/2" TEL QUE MONTRE "P" POUR PIVOT ET "L" POUR LIBRE.
- IDENTIFY PARTS WITH 1/2" LETTERING AS SHOWN "P" FOR PIVOT AND "L" FOR FREE.
- TEL QUE MONTRE POUR ASSEMBLER AVEC PIVOT ET COMMANDE DU COTE GAUCHE, OPPOSE POUR ASSEMBLER AVEC PIVOT ET COMMANDE DU COTE DROIT.
- AS SHOWN FOR ASSEMBLY WITH PIVOT AND DRIVE ON LEFT HAND SIDE, OPPOSITE FOR ASSEMBLY FOR PIVOT AND DRIVE ON RIGHT HAND SIDE.



POIDS WEIGHT : 17312 LBS

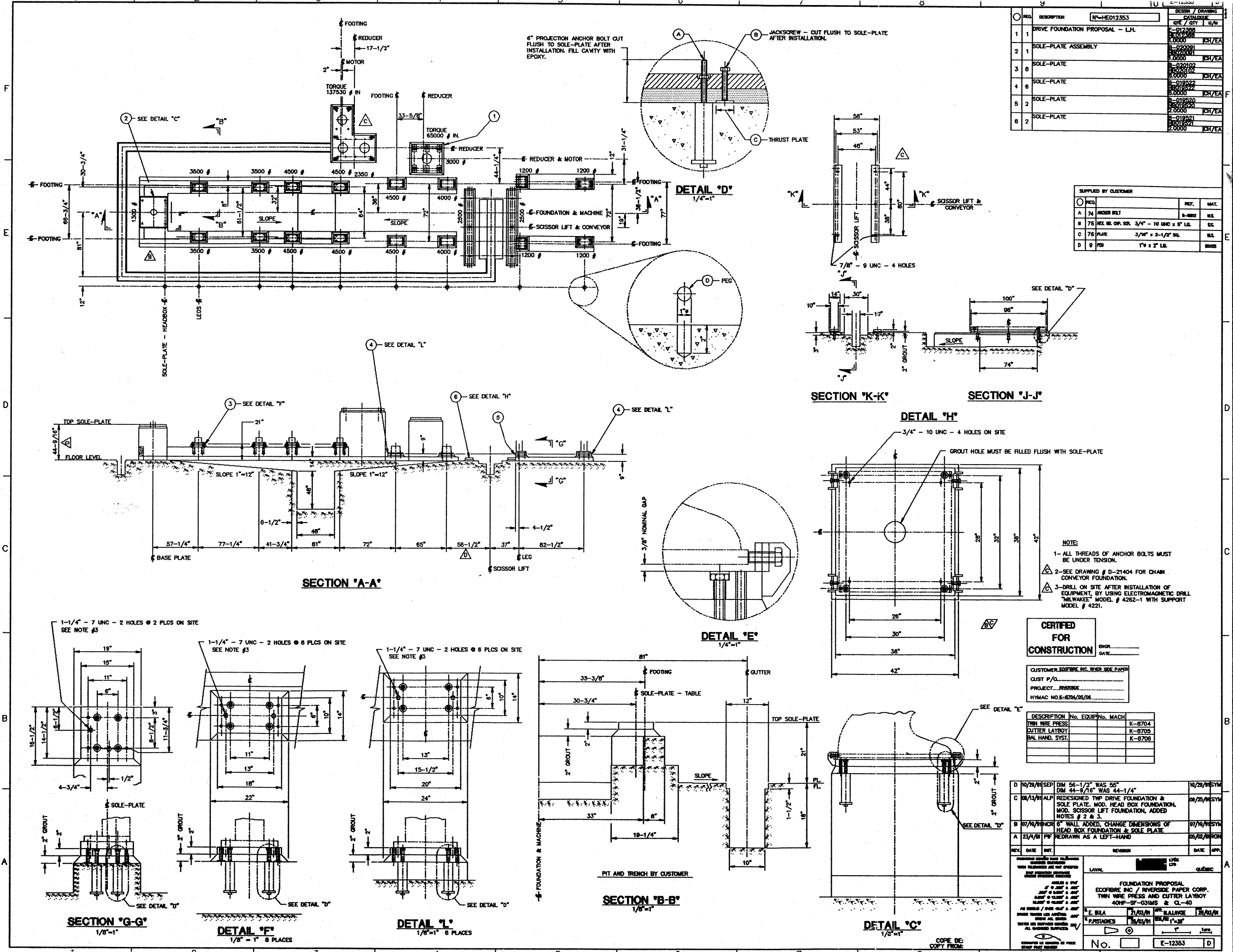
COPIE DE: COPY FROM:

REV	DATE	INT.	REVISION	DATE	APP.
1					

ARRGT BRAS & ROUL. HAUTE PRESSION
ASS'GE GEN. HAUTE PRESSION, PDT
HIGH PRESSURE ARMS & ROLLS ARRGT
HIGH PRESSURE GENERAL ASS'Y, TWP

DATE: 01/12/11
DATE: 02/02/11

NO. E-012677



NO.	DESCRIPTION	QTY	UNIT	DESIGN / DRAWING
1	DRIVE FOUNDATION PROPOSAL - L.H.	1	EA	N=HE012353
2	SOLE-PLATE ASSEMBLY	1	EA	017388
3	SOLE-PLATE	1	EA	017388
4	SOLE-PLATE	1	EA	022102
5	SOLE-PLATE	1	EA	022102
6	SOLE-PLATE	1	EA	018222
7	SOLE-PLATE	1	EA	018222
8	SOLE-PLATE	1	EA	018222
9	SOLE-PLATE	1	EA	018222

REQ.	DESCRIPTION	REF.	MAT.
A	74 ANCHOR BOLT	8-8822	MS.
B	76 HEX HD. OP. SK. 3/4" - 10 UNF x 8" LG.		SS.
C	76 PLATE 3/16" x 2-1/2" SQ.		MS.
D	9 FIB 1" x 2" LG.		FRIB

CERTIFIED FOR CONSTRUCTION

ENGR. _____
DATE _____

CUSTOMER: ECOPRIME, INC. RIVER PAPER
CUST. P.O. _____
PROJECT: RIVERPAPER
HYMAC NO. K-8704/05/06

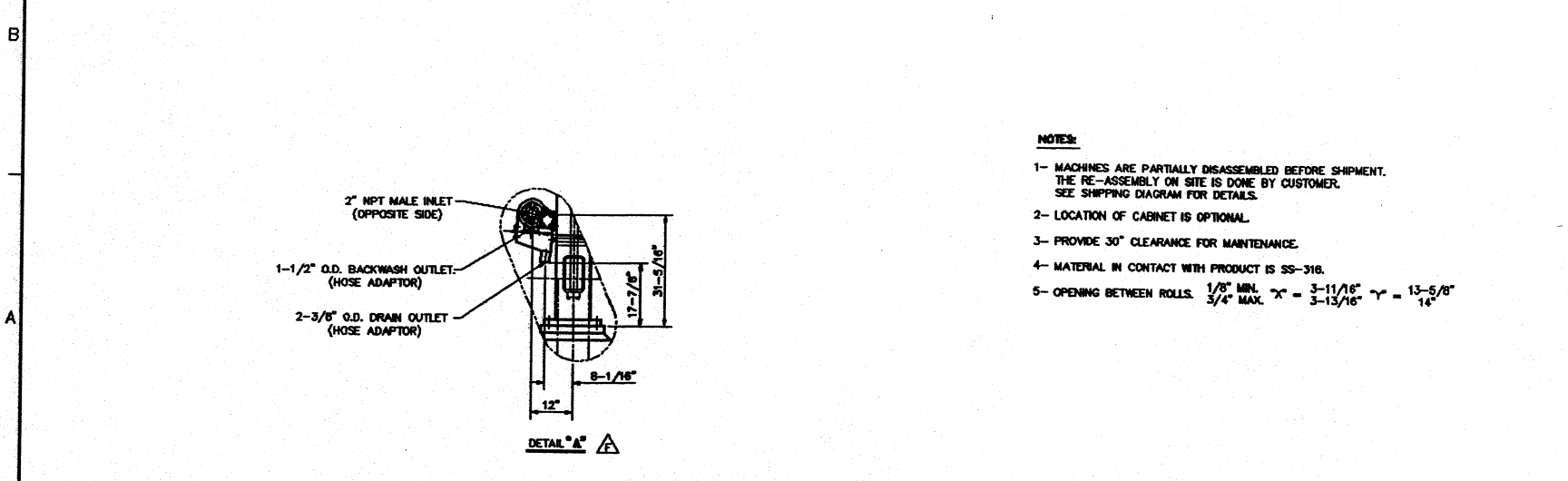
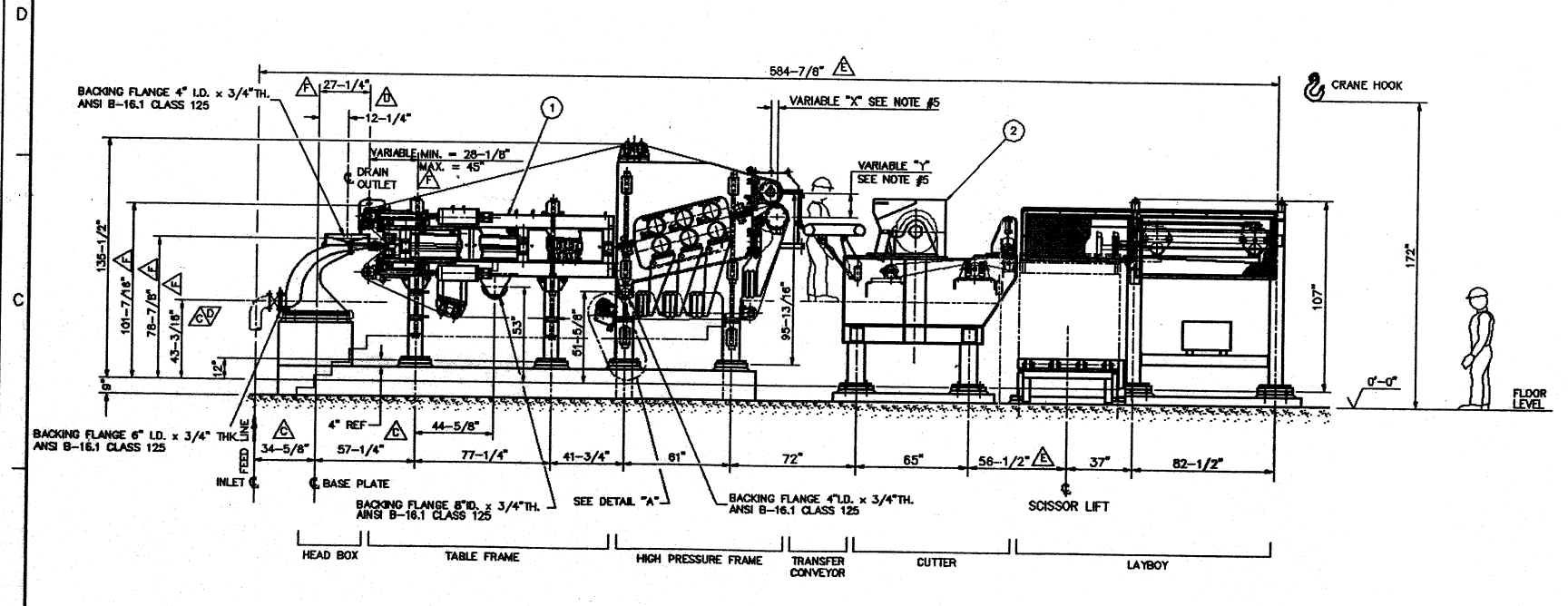
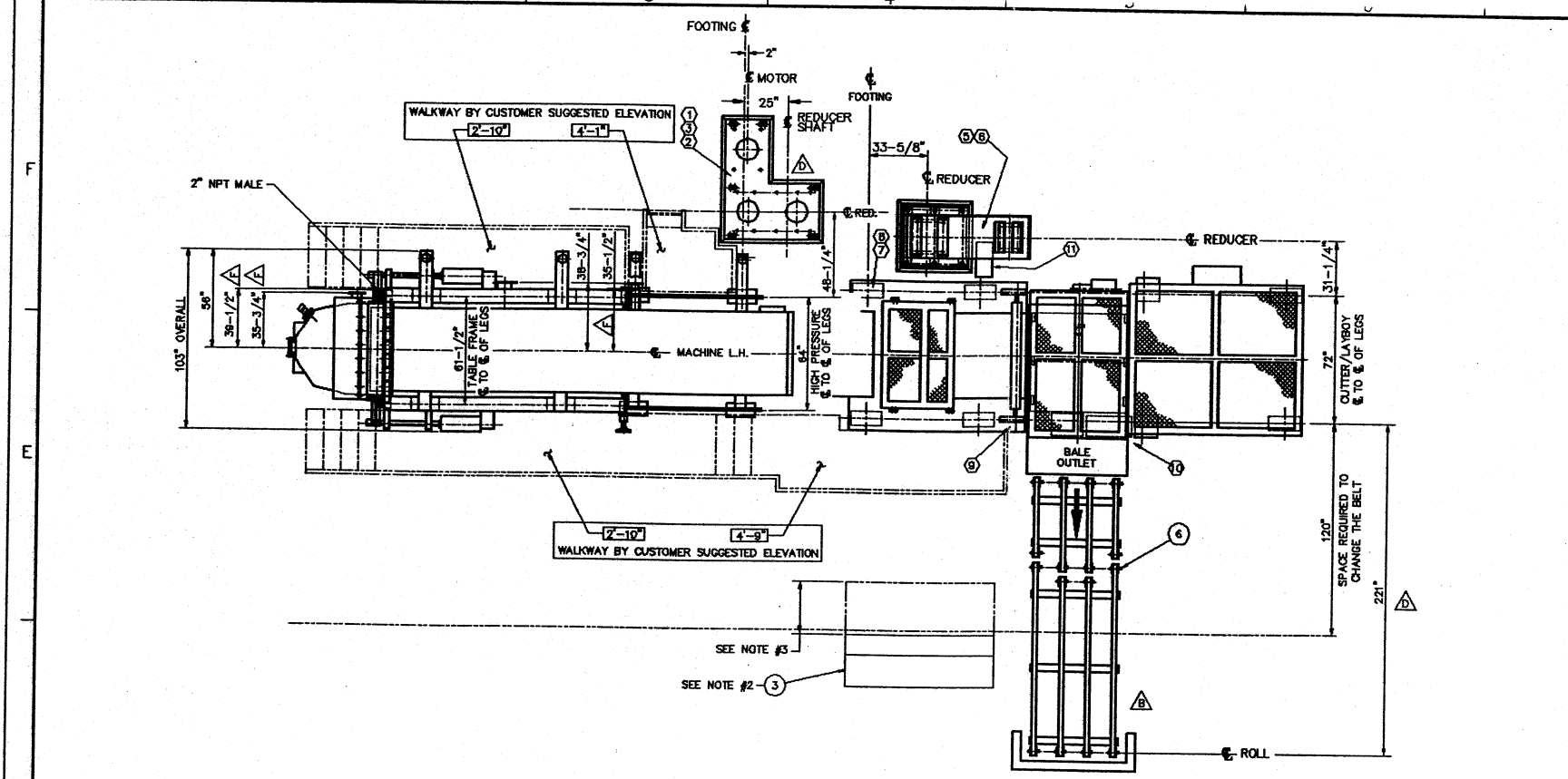
DESCRIPTION	No.	EQUIP. No.	MACH.
TWIN WIRE PRESS			K-8704
CUTTER LAYBOY			K-8705
BAL. HAND. SYST.			K-8706

REV.	DATE	BY	REVISION	DATE	APP.
D	10/29/91	SEP	DIM 56-1/2" WAS 56" DIM 44-9/16" WAS 44-1/4"	10/29/91	MSM
C	08/13/91	ALP	REDESIGNED TWP DRIVE FOUNDATION & SOLE PLATE. MOD. HEAD BOX FOUNDATION. MOD. SCISSOR LIFT FOUNDATION. ADDED NOTES # 2 & 3.	08/25/91	MSM
B	07/10/91	FRNCR	8" WALL ADDED. CHANGE DIMENSIONS OF HEAD BOX FOUNDATION & SOLE PLATE.	07/10/91	MSM
A	23/4/91	PF	REDRAWN AS A LEFT-HAND	05/02/91	MSM

FOUNDATION PROPOSAL
ECOPRIME INC / RIVERPAPER CORP.
TWIN WIRE PRESS AND CUTTER LAYBOY
40HP - SF - 03IMS & CL-40

E. BELA 21/AS/91
P. FUSTAGHER 21/AS/91

No. E-12353



- NOTES:**
- 1- MACHINES ARE PARTIALLY DISASSEMBLED BEFORE SHIPMENT. THE RE-ASSEMBLY ON SITE IS DONE BY CUSTOMER. SEE SHIPPING DIAGRAM FOR DETAILS.
 - 2- LOCATION OF CABINET IS OPTIONAL.
 - 3- PROVIDE 30" CLEARANCE FOR MAINTENANCE.
 - 4- MATERIAL IN CONTACT WITH PRODUCT IS SS-316.
 - 5- OPENING BETWEEN ROLLS. 1/8" MIN. X = 3-11/16" Y = 13-5/8" 3/4" MAX.

NO.	DESCRIPTION	QTY.	UNIT	DATE	BY	APP.
K-8704	TWIN WIRE PRESS - LEFT-HAND	1	EA			
K-8705	CUTTER LAYBOY - LEFT-HAND	1	EA			
K-8704	CABINET GENERAL ASSEMBLY	1	EA			
K-8704	FOUNDATION PROPOSAL	1	EA			
K-8704	INSTRUMENTS ELECT. & PNEU. LOCATION	1	EA			
K-8706	BALE HANDLING SYSTEM	1	EA			

OPERATING CONDITIONS:

STOCK	HIGH GRADE MIXED WASTE
TONNAGE	88 BOSTPD
INLET CONSISTENCY	3.5-4.5% B.D.
OUTLET CONSISTENCY	50% B.D.
FREENESS	450 mL
TEMPERATURE	90-100° F. MIN.

DRIVE SPECIFICATIONS:

ITEM	DESCRIPTION	SPECIFICATIONS
1	MOTOR WITH A.C. DRIVE CONTROLLER	50 HP 1.15 SF 1200 RPM FR. 368TS BY HYMAC.
2	REDUCER C/W OIL PUMP MOTOR	HAMILTON 368SR RATIO 51.4058:1 1 HP @ 1200 RPM 3/60/460V FR. # 148T-TEPC 1.15 SF SUPPLY BY HYMAC
3	COUPLINGS	FAK SERIES 1040G

ITEM CUTTER LAYBOY

5	KNIFE MOTOR	15 HP 1.15SF 1750 RPM FR. 254T BY HYMAC
6	REDUCER	EURODRIVE K-128 RATIO 47.68:1
7	TRANSFER BELT MOTOR	1 HP 1.15SF 1750 RPM FR. 143 C-FLANGE BY HYMAC
8	REDUCER	EURODRIVE K-66 RATIO 24.46:1
9	HIGH SPEED BELT REDUCER MOTOR	EURODRIVE R6025D1T00LS4 RATIO 7.5:1 3HP 38 RPM TO 288 RPM D-FLANGE, BY HYMAC
10	CONVEYOR MOTOR	2HP 1.15 SF 1750 RPM FRAME 145T BY HYMAC
11	SCISSOR LIFT PUMP MOTOR	15 HP 1.15SF 1750 RPM FR. 254T BY HYMAC

WATER REQUIREMENTS:

HEADBOX SHOWERS (NON-CONT.)	100 PSI-10 USGPM FRESH WATER, PART <069"
TWP WIRE CLEANING SHOWERS	140 PSI-60 USGPM WHITE WATER, 250 P.P.M. PART <069"

AIR REQUIREMENTS:

TWP AVERAGE AIR BAG ACTIVATION	70 PSI 5 CFH
TWP AIR BAG ACTIVATION	70 PSI 250 CFH (START UP)
CL AIR TANK	70 PSI 4.3 SCFM

APPROXIMATE WEIGHTS:

HEADBOX	1305 #
TABLE FRAME	14000 #
HIGH PRESSURE FRAME	18000 #
DRIVE ROLLS	1350 #
CUTTER	16000 #
KNIFE ROLL	3822 #
LAYBOY	4000 #

PAINT SPECIFICATIONS:

PAINT FINISH	HYMAC "B"
COLOR FOR FRAMES	CLOUD GREY F-7
COLOR FOR CHAIRS	BLUE B4-B-867 MEDIUM YELLOW B4-Y-12

INFORMATION:

SCHEMA PNEUMATIQUE PNEUMATIC DIAGRAM	E-12404
PROCEDURE & CONTROL PROCESS	E-12454 E-12455
PM LOGISTIQUE LOGISTIC	D-21923 D-21924 D-21925 D-21926 D-21927 D-21928

CERTIFIED FOR CONSTRUCTION
ENGR. _____
DATE _____

CUSTOMER LOGISTICS ENGINEERING
CUST P/O: _____
PROJECT NUMBER: _____
HYMAC NO. E-12330

DESCRIPTION	NO.	EQUIP. NO.	MACH.
TWIN WIRE PRESS	1		K-8704
CUTTER LAYBOY	1		K-8705
BALE HAND. SYST.	1		K-8706

G 02/13/92	INSTR. #3- HED12461 EIA/T/WAS HED12355	02/13/92
F 12/13/91	50-3/4" 38-1/2" 27-1/4" 78-7/8" 38-28-1/8" 30-7/16" 43-15/16" WIRE 33-13-1/8" 28-11/16" 79-5/8" 45-1/4" 27-1/4" 95-1/4" 42-7/8" 11/12/91/SYM	
E 11/12/91	DETAIL A MODIFIED AIR TANK WAS 80 CFH DIM 584-7/8" WAS 583-3/8" DIM 58-1/2" WAS 58" C/W OIL PUMP MOTOR SUPPLY BY HYMAC	11/12/91/SYM
D 06/18/91	221" WAS 190", 583-3/8" WAS 588-7/8" CHANGED TWP DRIVE SPEC & FOUNDATION. CHANGED HIGH PRESSURE SHOWER, CHANGED CUTTER LAYBOY REDUCER SPEC. CHANGED HIGH SPEED RED & MOT SPEC. REMOVED REAR PIPE ITEM # 6 ADDED.	06/25/91/SYM
C 07/09/91	CHANGE HEAD BOX & INFORMATION DWG NO., REMOVE ITEM 4 OF DRIVE SPEC. CHANGE LEVEL OF TABLE FRAME & HIGH PRESS. FRAME REMOVE TAIL CUTTER WATER REQUIREMENT	07/09/91/SYM
B 11/10/91	CONVEYOR ADDED	07/10/91/SYM
A 23/4/91	PIF REDRAWN AS A LEFT-HAND	03/16/91/CON

REV. DATE INT. REVISION

APPROVED BY: _____ DATE: _____

CHECKED BY: _____ DATE: _____

GENERAL ARRANGEMENT
ECOFIBRE INC. / RIVERSIDE PAPER CORP.
TWIN WIRE PRESS AND CUTTER LAYBOY
401P-SF-031M5 / CL-40

NO. E-12330 6