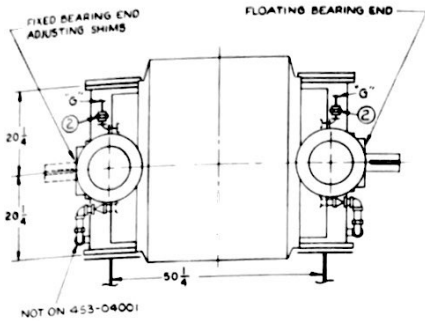


SEPTEMBER 16, 1983

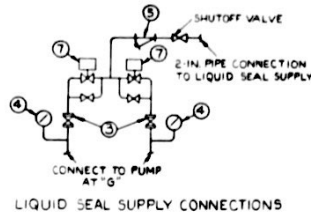
subject to change without notice;
 supersedes all previous dimensions and installation data.
 Printed In U.S.A.

dimensions installation data	VACUUM PUMPS
pumps	type CL

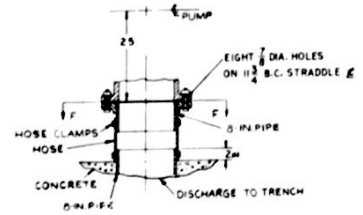
PUMPS—SERIES 4000



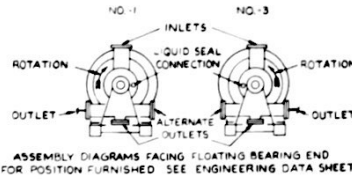
IMPORTANT NOTE:—
 MOUNT COUPLINGS ON SHAFT 91 3/4
 FACE TO FACE 45/8 EACH SIDE OF
 PUMP



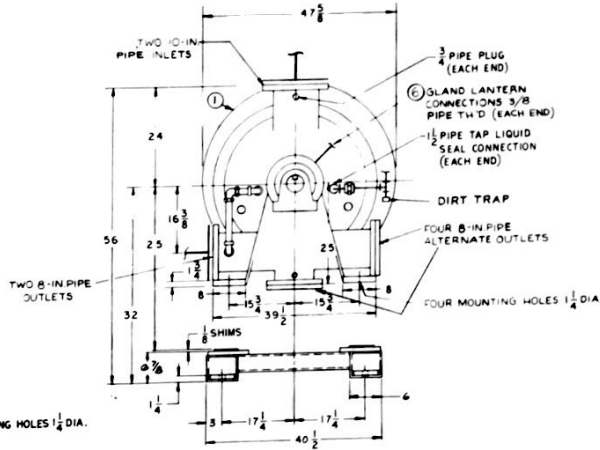
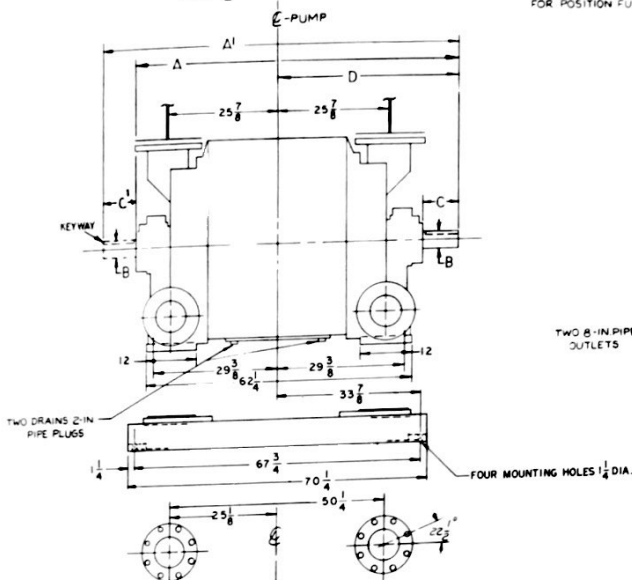
LIQUID SEAL SUPPLY CONNECTIONS



NOTE: BOTTOM DISCHARGE PARTS
 BELOW "F" NOT FURNISHED
 BY NASH ENGRG. CO.
 METHOD OF CONNECTING BOTTOM
 DISCHARGE TO TRENCH



ASSEMBLY DIAGRAMS FACING FLOATING BEARING END
 FOR POSITION FURNISHED SEE ENGINEERING DATA SHEET



Drawing 14-2672E

Shaft Extension	Drive	A	A'	B	C	C'	D	Keyway
Single	Belt or Coupling	80-3/4	-	5	11-1/2	-	46-1/4	1-1/4 x 5/8
Double	Coupling	-	91-1/4	5-1/4	11-1/8	11-1/8	45-5/8	1-1/4 x 5/8

NOTES:

1. Items listed below are furnished only if specifically ordered. See Engineering Data Sheet.

- | | |
|-----|-----------------|
| No. | Item |
| 1 | Pump, Vacuum |
| 2 | Union, Orifice |
| 3 | Cock |
| 4 | Gage, Pressure |
| 5 | Strainer |
| 6 | Gland, Lantern |
| 7 | Valve, Solenoid |

2. Foundation bolts are not furnished.
3. Piping connection dimensions are approximate.
4. For certification refer to Engineering Data Sheet.
5. Dimensions are in inches.
6. All pump flanges are ANSI STD 125 lbs. Pipe threads are American Standard.
7. For installation and operation see Instruction Bulletins.

NASH ENGINEERING COMPANY
 NORWALK, CT. 06856. U.S.A.

page B2-2475

OCTOBER 1, 1984

subject to change without notice
 supersedes all previous dimensions and drawings
 Printed in U.S.A.

dimensions	VACUUM PUMPS
installation data	
pumps	type CL

PUMPS—SERIES 4000 (motor and V-belt drive)

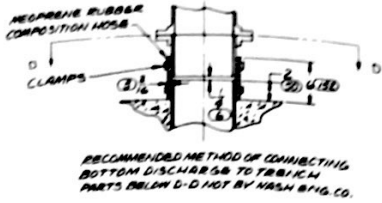
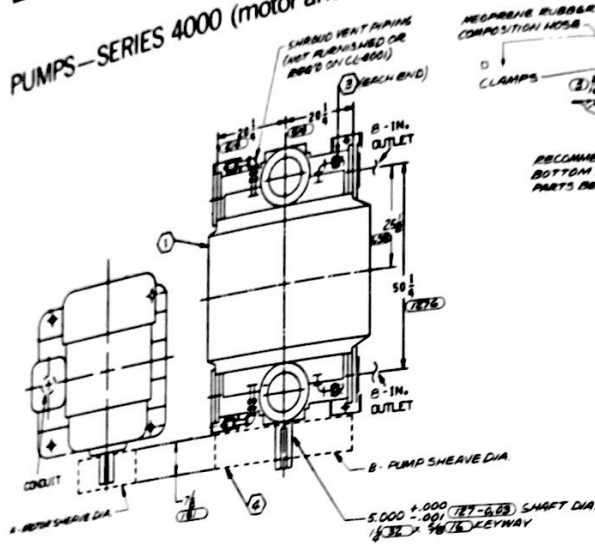
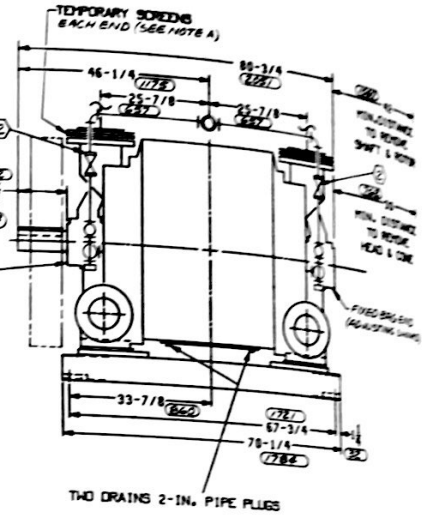
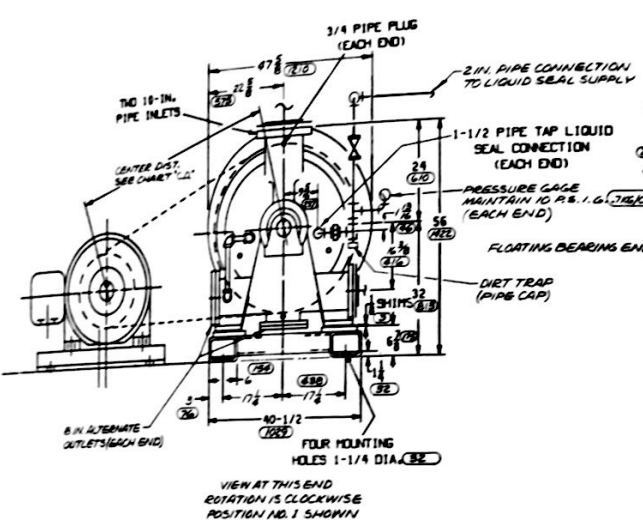


FIGURE 1
 CL-4000 MOTOR AND V-BELT DRIVE
 MOTOR SHEAVE AND SHAFT DIA. WITH MOTOR
 MOTOR SHEAVE AND SHAFT DIA. WITH MOTOR
 MOTOR SHEAVE AND SHAFT DIA. WITH MOTOR
 MOTOR SHEAVE AND SHAFT DIA. WITH MOTOR
 MOTOR SHEAVE AND SHAFT DIA. WITH MOTOR
 MOTOR SHEAVE AND SHAFT DIA. WITH MOTOR
 MOTOR SHEAVE AND SHAFT DIA. WITH MOTOR
 MOTOR SHEAVE AND SHAFT DIA. WITH MOTOR

ITEM 4 DRIVE SPECIFICATIONS												
DRIVE NO.	RPM RATIO		NO. OF GROOVES	BELT TYPE	CL-4000/1250 RPM MOTOR		SHEAVE WT. (LBS.)					
	MTR.	PUMP			A	B	C	MOTOR	PUMP	TOTAL		
1	1175	307	6	072360	16.0	59.0	56.0	118	690	300	150	150
2	1175	329	6	072360	15.0	59.0	55.0	118	690	300	150	150
3	1175	352	6	072360	16.0	59.0	56.0	130	690	300	150	150
4	1175	376	6	072360	17.0	59.0	56.0	140	690	300	150	150
5	1175	396	6	072360	18.0	59.0	56.0	140	690	300	150	150
6	1175	418	6	072360	19.0	59.0	56.0	160	690	300	150	150

FACE WIDTH OF SHEAVE 7-1/8 IN.
 ALL MOTOR SHEAVES USE J BUSHING EXCEPT IN SHEAVE - F BUSHING



Drawing 14-65620

NOTES:

- Bill of Materials. For items furnished and certification refer to Engineering Data Sheet for this order.
- For additional details refer to Engineering Data Sheet supplied for each pump.
- Foundation bolts are not furnished.
- Pipe threads are American Standard.
- All pump flanges are flat face with ANSI CL125 bolt pattern.
- Dimensions shown in are MM.
- Dimensions are in inches.

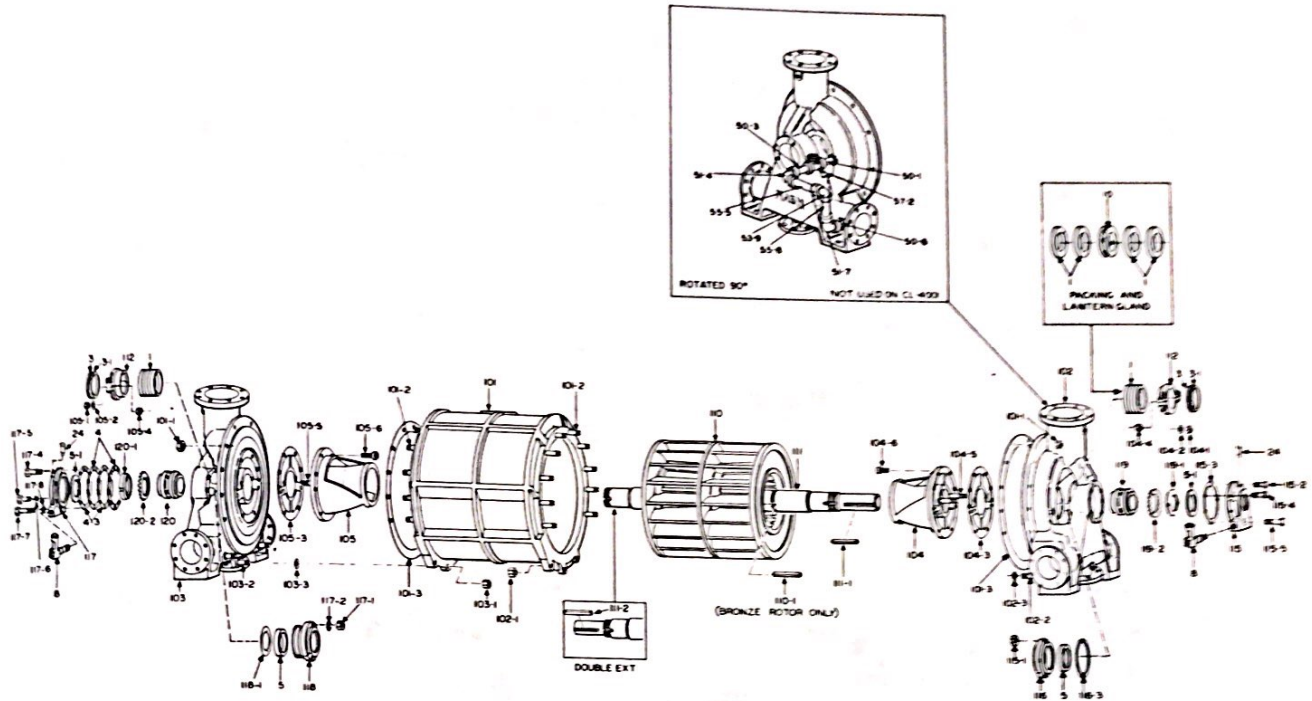
NOTE A: Temporary Screens and Cleanouts. Be sure screen is in place during piping installation. Keep clean during initial operation and remove it after suction is entirely clear.

NOTE B: Sole plate skids are not designed to be self-supporting and must be shimmed out and securely bolted down before grouting.

subject to change without notice;
supersedes all previous exploded views.
Printed in U.S.A.

exploded view	VACUUM PUMPS
pumps	type CL

PUMPS—SERIES 4000



Drawing 14-2326A

Index No.	Part Name	Qty.	Index No.	Part Name	Qty.	Index No.	Part Name	Qty.
1	Packing	10	104-3	Gasket, Cone, DE	1	117	Cap, Outer, IE	1
3	Slinger	2	104-4	Nut, Cone, DE	2	117-1	Nut, Screw, Cap, IE	3
3-1	Spring, Slinger	2	104-5	Stud, Cone, DE	2	117-2	Lockwasher, Screw, IE	3
4	Shim	12	104-6	Screw, Soc. Hd., Cone, DE	8	117-4	Screw, Cap, IE	3
4-3	Gasket, Shim	6	105	Cone, IE	1	117-5	Screw, Cap, Outer, IE	2
5	Lip Seal	2	105-1	Nut, Gland, IE	2	117-6	Lockwasher, Screw, IE	2
5-1	Lip Seal	2	105-2	Washer, Gland, IE	2	117-7	Screw, Cap, Outer, IE	1
8	Oiler	2	105-3	Gasket, Cone, IE	1	117-8	Lockwasher, Screw, IE	1
10*	Gland, Lantern	2	105-4	Nut, Cone, IE	2	118	Cap, Inner, IE	1
24	Breather	2	105-5	Stud, Cone, IE	2	118-1	O-Ring, Cap, Inner, IE	1
101	Body	1	105-6	Screw, Soc. Hd., Cone, IE	8	119	Bearing, Roller, DE	1
101-1	Nut, Stud, Body	20	110	Rotor	1	119-1	Locknut, Bearing, DE	1
101-2	Stud, Body	20	110-1*	Key, Rotor	1	119-2	Lockwasher, Bearing, DE	1
101-3	Gasket, Body	11	111	Shaft	1	120	Bearing, Roller, IE	1
102	Head, DE	1	111-1	Key, Ext., DE	1	120-1	Locknut, Bearing, IE	1
102-1	Nut, Stud, Head, DE	3	111-2*	Key, Ext., IE	1	120-2	Lockwasher, Bearing, IE	1
102-2	Stud, Head, DE	3	112	Gland Assembly	2	50-1	Nipple, Pipe	2
102-3	Gasket, Stud, DE	3	115	Cap, Outer, DE	1	50-3	Nipple, Pipe	2
103	Head, IE	16	115-1	Nut, Screw, Cap, DE	3	50-6	Nipple, Pipe	2
103-1	Nut, Stud, Head, IE	1	115-2	Screw, Cap, DE	3	51-4	Elbow, Pipe, 90°	2
103-2	Stud, Head, IE	3	115-3	Gasket, Cap, Outer, DE	1	51-7	Elbow, Pipe, 90°	2
103-3	Gasket, Stud, IE	3	115-4	Screw, Cap, Outer, DE	2	53-9	Elbow, Dresser	2
104	Cone, DE	17	115-5	Screw, Cap, Outer, DE	1	55-5	Pipe, T.O.E.	2
104-1	Nut, Gland, DE	1	116	Cap, Inner, DE	1	55-8	Pipe, T.O.E.	2
104-2	Washer, Gland, DE	2	116-3	Gasket, Cap, Inner, DE	1	57-2	Valve, Check	2

*when used.

NASH® ENGINEERING COMPANY
NORWALK, CT. 06856, U.S.A.

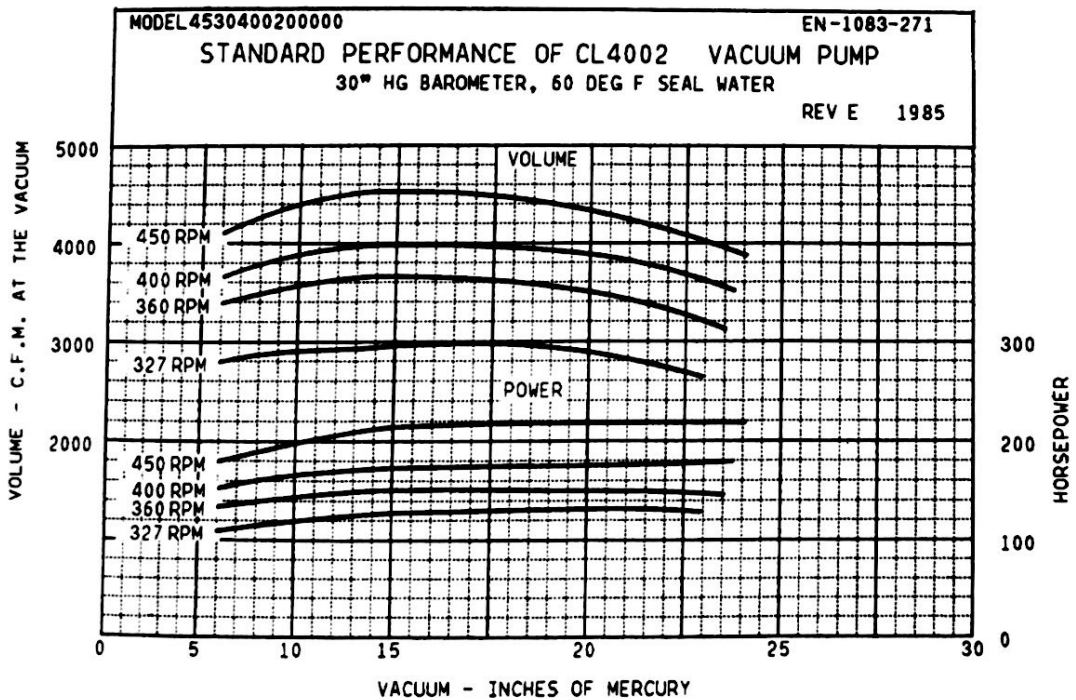
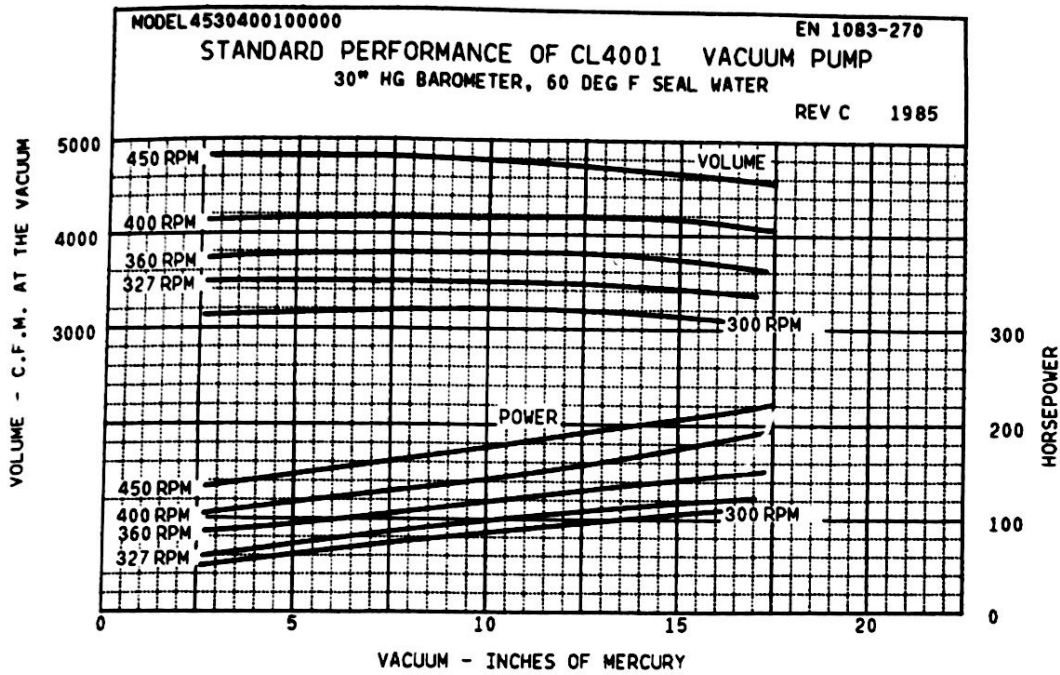
0000 B3 2477

MARCH 1, 1985

subject to change without notice;
supersedes all previous performance data.
Printed in U.S.A.

performance	VACUUM PUMPS
pumps	type CL

PUMPS—SIZES 4001, 4002



NASH® ENGINEERING COMPANY
NORWALK, CT 06856 U.S.A.